

XGQT1 Rigid Coupling



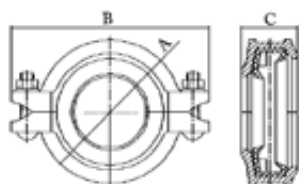
Nominal Size mm/in	Pipe O.D mm/in	Working Pressure PSI/MPa	Dimension			Bolt/Nut
			A mm/in	B mm/in	C mm/in	
25	33.7	300	53	93	45	M10*45
1	1.327	2.07	2.087	3.661	1.772	M10*45
32	42.4	300	63	103	45	M10*45
1 1/4	1.669	2.07	2.480	4.055	1.772	M10*45
40	48.3	300	68	108	45	M10*55
1 1/2	1.9	2.07	2.677	4.252	1.772	M10*55
50	60.3	300	81	121	45	M10*55
2	2.375	2.07	3.189	4.764	1.772	M10*55
65	73	300	94	136	46	M10*55
2 1/2	2.875	2.07	3.701	5.354	1.811	M10*55
65	76.1	300	97	139	46	M10*55
3OD	3	2.07	3.819	5.472	1.811	M10*55
80	88.9	300	111	153	46	M10*60
3	3.5	2.07	4.370	6.024	1.811	M10*60
100	114.3	300	138	185	47	M12*65
4	4.5	2.07	5.433	7.283	1.850	M12*65
125	139.7	300	164	213	47	M12*70
5 1/2 OD	5.5	2.07	6.457	8.386	1.850	M12*70
125	141.3	300	169	222	50	M12*70
5	5.563	2.07	6.654	8.740	1.969	M12*70
150	165.1	300	193	241	48	M12*70
6 1/2 OD	6.5	2.07	7.598	9.488	1.890	M12*70
150	168.3	300	196	245	48	M12*70
6	6.625	2.07	7.717	9.646	1.890	M12*70
200	219.1	300	254	318	60	M16*85
8	8.625	2.07	10.000	12.520	2.362	M16*85
250	273	300	309	388	62	M20*110
10	10.75	2.07	12.165	15.276	2.441	M20*110
300	323.9	300	365	444	64	M20*110
12	12.75	2.07	14.370	17.480	2.520	M20*110

XGQT2 Flexible Coupling



Nominal Size mm/in	Pipe O.D mm/in	Working Pressure PSI/MPa	Dimension			Bolt/Nut
			A mm/in	B mm/in	C mm/in	
25	33.7	300	53	93	45	M10*45
1	1.327	2.07	2.087	3.661	1.772	M10*45
32	42.4	300	63	103	45	M10*45
1 1/4	1.669	2.07	2.480	4.055	1.772	M10*45
40	48.3	300	68	108	45	M10*55
1 1/2	1.9	2.07	2.677	4.252	1.772	M10*55
50	60.3	300	81	121	45	M10*55
2	2.375	2.07	3.189	4.764	1.772	M10*55
65	73	300	94	136	46	M10*55
2 1/2	2.875	2.07	3.701	5.354	1.811	M10*55
65	76.1	300	97	139	46	M10*55
3OD	3	2.07	3.819	5.472	1.811	M10*55
80	88.9	300	111	153	46	M10*60
3	3.5	2.07	4.370	6.024	1.811	M10*60
100	114.3	300	138	185	47	M12*65
4	4.5	2.07	5.433	7.283	1.850	M12*65
125	139.7	300	164	213	47	M12*70
5 1/2 OD	5.5	2.07	6.457	8.386	1.850	M12*70
150	165.1	300	193	241	48	M12*70
6 1/2 OD	6.5	2.07	7.598	9.488	1.890	M12*70
150	168.3	300	196	245	48	M12*70
6	6.625	2.07	7.717	9.646	1.890	M12*70
200	219.1	300	254	318	60	M16*85
8	8.625	2.07	10.000	12.520	2.362	M16*85
250	273	300	309	388	62	M20*110
10	10.75	2.07	12.165	15.276	2.441	M20*110
300	323.9	300	365	444	64	M20*110
12	12.75	2.07	14.370	17.480	2.520	M20*110

XGQT5
Reducing Flexible
Coupling



Nominal Size mm/in	Pipe O.D mm/in	Working Pressure PSI/MPa	Dimension			Bolt/Nut
			A mm/in	B mm/in	C mm/in	
40 × 32 1 1/2 × 1 1/4	48.3 × 42.4 1.900 × 1.669	300 2.07	73 2.874	118 4.646	48 1.890	M10*55
50 × 32 2 × 1 1/4	60.3 × 42.4 2.375 × 1.669	300 2.07	85 3.346	130 5.118	48 1.890	M10*55
50 × 40 2 × 1 1/2	60.3 × 48.3 2.375 × 1.900	300 2.07	87 3.425	130 5.118	48 1.890	M10*55
65 × 25 2 1/2 × 1	73 × 33.7 2.875 × 1.315	300 2.07	98 3.858	140 5.512	45 1.772	M10*60
65 × 40 2 1/2 × 1 1/2	73 × 48.3 2.875 × 1.900	300 2.07	100 3.937	142 5.591	48 1.890	M10*60
65 × 50 2 1/2 × 2	73 × 60.3 2.875 × 2.375	300 2.07	100 3.937	142 5.591	48 1.890	M10*60
65 × 40 3OD × 1 1/2	76.1 × 48.3 3.000 × 1.900	300 2.07	102 4.016	147 5.787	48 1.890	M10*60
65 × 50 3OD × 2	76.1 × 60.3 3.000 × 2.375	300 2.07	102 4.016	147 5.787	48 1.890	M10*60
65 × 65 3OD × 2 1/2	76.1 × 73 3.000 × 2.875	300 2.07	101 3.976	146 5.748	48 1.890	M10*60
80 × 40 3 × 1 1/2	88.9 × 48.3 3.500 × 1.900	300 2.07	116 4.567	165 6.496	49 1.929	M12*70
80 × 50 3 × 2	88.9 × 60.3 3.500 × 2.375	300 2.07	116 4.567	165 6.496	49 1.929	M12*70
80 × 65 3 × 2 1/2	88.9 × 73 3.500 × 2.375	300 2.07	116 4.567	165 6.496	49 1.929	M12*70
80 × 65 3 × 3OD	88.9 × 76.1 3.500 × 3.000	300 2.07	116 4.567	165 6.496	49 1.929	M12*70
100 × 40 4 × 1 1/2	114.3 × 48.3 4.500 × 1.900	300 2.07	146 5.748	200 7.874	52 2.047	M14*75
100 × 50 4 × 2	114.3 × 60.3 4.500 × 2.375	300 2.07	146 5.748	200 7.874	52 2.047	M14*75
100 × 65 4 × 2 1/2	114.3 × 73 4.500 × 1.327	300 2.07	146 5.748	200 7.874	52 2.047	M14*75
100 × 65 4 × 3OD	114.3 × 76.1 4.500 × 3.000	300 2.07	146 5.748	200 7.874	52 2.047	M14*75
100 × 80 4 × 3	114.3 × 88.9 4.500 × 3.500	300 2.07	146 5.748	200 7.874	52 2.047	M14*75
150 × 100 6 1/2 × 4	165.1 × 114.3 6.500 × 4.500	300 2.07	197 7.756	255 10.039	51 2.008	M16*85
150 × 80 6 × 3	168.3 × 88.9 6.625 × 3.500	300 2.07	200 7.874	259 10.197	52 2.047	M16*85
150 × 100 6 × 4	168.3 × 114.3 6.625 × 4.500	300 2.07	200 7.874	259 10.197	52 2.047	M16*85
150 × 125 6 × 5 1/2 OD	168.3 × 141.3 6.625 × 5.500	300 2.07	210 8.268	259 10.197	53 2.087	M16*85
150 × 150 6 × 6 1/2 OD	168.3 × 165.1 6.625 × 6.500	300 2.07	200 7.874	259 10.197	52 2.047	M16*85
200 × 150 8 × 6	219.1 × 168.3 8.625 × 6.625	300 2.07	258 10.157	335 13.189	62 2.441	M20*110

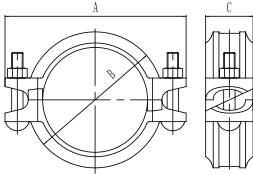
**Shouldered Flexible
Coupling**



Nominal Size mm/in	Pipe O.D mm/in	Working Pressure PSI/MPa	Dimension			Bolt/Nut
			A mm/in	B mm/in	C mm/in	
50 2	60.3 2.375	580 4.0	88	125	46	M12
80 3	88.9 3.5	580 4.0	119	160	49	M12
100 4	114.3 4.5	507.5 3.5	152	190	50	M12
125 5	139.7 6.5	507.5 3.5	186	248	54	M16
150 6	165.1 6.5	507.5 3.5	201	256	50	M16
200 8	219.1 8.625	435 3.0	265	340	60	M20
250 10	273 10.75	362.5 2.5	321	408	62	M22
300 12	323.9 12.75	362.5 2.5	380	463	64	M22

XGQT6

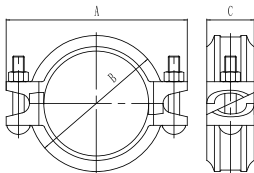
Angle Pad
Rigid Coupling



Nominal Size mm/in	Pipe O.D mm/in	Working Pressure PSI/MPa	Dimension			Bolt/Nut
			A mm/in	B mm/in	C mm/in	
32 1 1/4	42.4 1.669	300 2.07	64.5 2.539	106 4.17	45 1.772	M10*55
40 1 1/2	48.3 1.9	300 2.07	70.5 2.776	113.4 4.465	45 1.772	M10*55
50 2	60.3 2.375	300 2.07	83 3.268	126 4.96	48 1.890	M10*55
65 2 1/2	73 2.874	300 2.07	95 3.740	140 5.512	48 1.890	M10*60
65 2 1/2	76.1 3	300 2.07	99 3.898	143 5.630	48 1.890	M10*60
80 3	88.9 3.5	300 2.07	112 4.409	161 6.34	48 1.890	M12*65
100 4	114.3 4.5	300 2.07	139 5.472	198 7.795	51 2.008	M14*75
125 5	139.7 5.5	300 2.07	170 6.693	228 8.98	52 2.047	M14*75
150 6 1/2 OD	165.1 6.5	300 2.07	194 7.638	261 10.276	52 2.047	M16*85
150 6	168.3 6.626	300 2.07	200 7.874	267 10.512	52 2.047	M16*85
200 8	219.1 8.625	300 2.07	258 10.157	332 13.07	62 2.441	M20*110

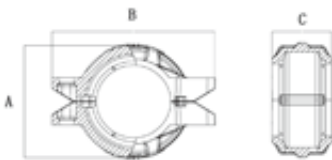
XGQT7

Push-On
Rigid Coupling



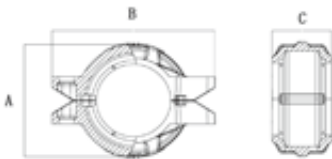
Nominal Size mm/in	Pipe O.D mm/in	Working Pressure PSI/MPa	Dimension			Bolt/Nut
			A mm/in	B mm/in	C mm/in	
25 1	33.7 1.327	300 2.07	57 2.244	98 3.858	46 1.772	10*45
32 1 1/4	42.4 1.669	300 2.07	64 2.520	110 4.331	47 1.850	10*45
40 1 1/2	48.3 1.9	300 2.07	69 2.717	116 4.567	47 1.772	10*45
50 2	60.3 2.375	300 2.07	83 3.268	128 5.039	47 1.850	10*55
65 2 1/2	73 2.875	300 2.07	96 3.780	142 5.591	47 1.772	10*55
65 3 OD	76.1 3	300 2.07	98 3.858	145 5.709	47 1.850	10*55
80 3	88.9 3.5	300 2.07	108 4.252	158 6.220	48 1.890	10*60
100 4	114.3 4.5	300 2.07	135 5.315	188 7.402	48 1.890	12*65
125 5 1/2 OD	139.7 5.5	300 2.07	164 6.457	223 8.780	49 1.929	12*70
125 5	141.3 5.563	300 2.07	167 6.575	224 8.819	49 1.929	12*70
150 6 1/2 OD	165.1 6.5	300 2.07	188 7.402	247 9.724	49 1.929	12*70
150 6	168.3 6.625	300 2.07	192 7.559	249 9.803	49 1.929	12*70
200 8	219.1 8.625	300 2.07	250 9.843	318 12.520	57 2.244	16*85
250 10	273 10.75	300 2.07	315 12.402	410 16.142	63 2.480	20*110
300 12	323.9 12.75	300 2.07	372 14.646	470 18.504	63 2.480	20*110

XGQT11
Heavy Duty Rigid Coupling



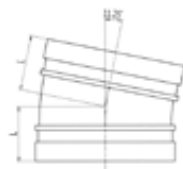
Nominal Size mm/in	Pipe O.D mm/in	Working Pressure PSI/MPa	Dimension			Bolt/Nut
			A mm/in	B mm/in	C mm/in	
50 2	60.3 2.375	500 3.45	86 3.386	125 4.92	46 1.81	M10*60
65 2 1/2	73 2.875	500 3.45	99 3.89	146 5.75	47 1.85	M12*65
65 2 1/2	76.1 3	500 3.45	102 4.02	150 5.90	47 1.85	M12*65
80 3	88.9 3.5	500 3.45	115 4.53	164 6.46	47 1.85	M12*65
100 4	114.3 4.5	500 3.45	142 5.59	190 7.48	50 1.97	M12*70
125 5 1/2 OD	139.7 5.5	500 3.45	170 6.69	217 8.54	50 1.97	M12*75
150 6 1/2 OD	165.1 6.5	500 3.45	200 7.87	256 10.00	50 1.97	M14*90
150 6	168.3 6.625	500 3.45	204 8.03	260 10.24	50 1.97	M14*90
200 8	219.1 8.625	500 3.45	266 10.47	340 13.39	60 2.36	M20*110

XGQT12
Heavy Duty Flexible Coupling



Nominal Size mm/in	Pipe O.D mm/in	Working Pressure PSI/MPa	Dimension			Bolt/Nut
			A mm/in	B mm/in	C mm/in	
50 2	60.3 2.375	500 3.45	86 3.386	125 4.92	46 1.81	M10*60
65 2 1/2	73 2.875	500 3.45	99 3.89	146 5.75	47 1.85	M12*65
65 2 1/2	76.1 3	500 3.45	102 4.02	150 5.90	47 1.85	M12*65
80 3	88.9 3.5	500 3.45	115 4.53	164 6.46	47 1.85	M12*65
100 4	114.3 4.5	500 3.45	142 5.59	190 7.48	50 1.97	M12*70
125 5 1/2 OD	139.7 5.5	500 3.45	170 6.69	217 8.54	50 1.97	M12*75
150 6 1/2 OD	165.1 6.5	500 3.45	200 7.87	256 10.00	50 1.97	M14*90
150 6	168.3 6.625	500 3.45	204 8.03	260 10.24	50 1.97	M14*90
200 8	219.1 8.625	500 3.45	266 10.47	340 13.39	60 2.36	M20*110

XGQT10
11.25° Elbow



Nominal Size mm/in	Pipe O.D mm/in	Working Pressure PSI/MPa	Dimension L mm/in
65 3OD	76.1 3	300 2.07	38 1.496
80 3	88.9 3.5	300 2.07	38 1.496
100 4	114.3 4.5	300 2.07	45 1.772
125 5 1/2 OD	139.7 5.5	300 2.07	51 2.008
150 6 1/2 OD	165.1 6.5	300 2.07	51 2.008
200 8	219.1 8.625	300 2.07	51 2.008

XGQT16

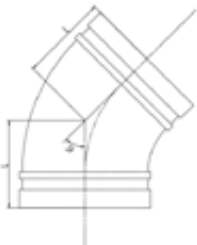
22.5° Elbow



Nominal Size mm/in	Pipe O.D mm/in	Working Pressure PSI/MPa	Dimension L mm/in
32	42.4	300	45
1 1/4	1.66	2.07	1.772
40	48.3	300	45
1 1/2	1.9	2.07	1.772
50	60.3	300	51
2	2.375	2.07	2.008
65	73	300	51
2 1/2	2.875	2.07	2.008
65	76.1	300	51
30D	3	2.07	2.008
80	88.9	300	57
3	3.5	2.07	2.244
100	114.3	300	72
4	4.5	2.07	2.835
125	139.7	300	73
5 1/2 OD	5.5	2.07	2.874
150	165.1	300	79
6 1/2 OD	6.5	2.07	3.110
150	168.3	300	79
6	6.625	2.07	3.110
200	219.1	300	98
8	8.625	2.07	3.858
250	273	300	75
10	10.75	2.07	2.953

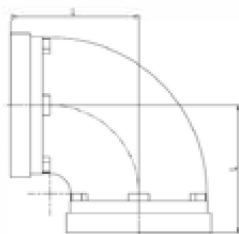
XGQT02

45° Elbow



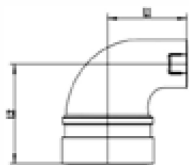
Nominal Size mm/in	Pipe O.D mm/in	Working Pressure PSI/MPa	Dimension L mm/in
25	33.7	300	44
1	1.315	2.07	1.732
32	42.4	300	45
1 1/4	1.66	2.07	1.772
40	48.3	300	45
1 1/2	1.9	2.07	1.772
50	60.3	300	51
2	2.375	2.07	2.008
65	73	300	57
2 1/2	2.875	2.07	2.244
65	76.1	300	57
30D	3	2.07	2.244
80	88.9	300	64
3	3.5	2.07	2.520
100	114.3	300	76
4	4.5	2.07	2.992
125	139.7	300	83
5 1/2 OD	5.5	2.07	3.268
150	165.1	300	89
6 1/2 OD	6.5	2.07	3.504
150	168.3	300	89
6	6.625	2.07	3.504
200	219.1	300	92
8	8.625	2.07	3.622
250	273	300	105
10	10.75	2.07	4.134
300	323.9	300	125
12	12.75	2.07	4.921

XGQT01
90° Elbow



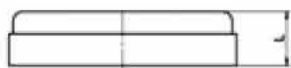
Nominal Size mm/in	Pipe O.D mm/in	Working Pressure PSI/MPa	Dimension L mm/in	
			Standard	Short
25 1	33.7 1.315	300 2.07	57 2.244	57 2.244
32 1 1/4	42.4 1.66	300 2.07	70 2.756	60 2.362
40 1 1/2	48.3 1.9	300 2.07	70 2.756	60 2.362
50 2	60.3 2.375	300 2.07	83 3.268	70 2.756
65 2 1/2	73 2.875	300 2.07	95 3.740	75 2.953
65 3OD	76.1 3	300 2.07	95 3.740	76 2.992
80 3	88.9 3.5	300 2.07	108 4.252	86 3.386
100 4	114.3 4.5	300 2.07	127 5.000	102 4.016
125 5 1/2 OD	139.7 5.5	300 2.07	140 5.512	122 4.803
150 6 1/2 OD	165.1 6.5	300 2.07	165 6.496	139 5.472
150 6	168.3 6.625	300 2.07	165 6.496	140 5.512
200 8	219.1 8.625	300 2.07	197 7.756	163 6.417
250 10	273 10.75	300 2.07	229 9.016	190 7.480
300 12	323.9 12.75	300 2.07	254 10.000	220 8.661

XGQT01GS
90° Reducing Elbow



Nominal Size mm/in	Pipe O.D mm/in	Working Pressure PSI/MPa	Dimension mm/in	
			L1	L2
32 x 15 1 1/4 x 1/2	42.4 x 21.3 1.66 x 0.83	300 2.07	35 1.378	44.5 1.752
32 x 20 1 1/4 x 3/4	42.4 x 26.9 1.66 x 1.05	300 2.07	35 1.378	47.5 1.870
32 x 25 1 1/4 x 1	42.4 x 33.7 1.66 x 1.32	300 2.07	38 1.496	52 2.047
40 x 25 1 1/2 x 1	48.3 x 33.7 1.90 x 1.32	300 2.07	38 1.496	52 2.047
50 x 15 2 x 1/2	60.3 x 21.3 2.38 x 0.83	300 2.07	52 2.047	60 2.362
50 x 20 2 x 3/4	60.3 x 26.9 2.38 x 1.05	300 2.07	52 2.047	60 2.362
50 x 25 2 x 1	60.3 x 48.3 2.38 x 1.90	300 2.07	52 2.047	60 2.362
65 x 25 2 1/2 x 1	73 x 33.7 2.88 x 1.32	300 2.07	50 1.969	52 2.047

XGQT06S
Cap with Concentric Hole



Nominal Size mm/in	Pipe O.D mm/in	Working Pressure PSI/MPa	Dimension L mm/in
50 x 25 2 x 1	60.3 x 33.7 2.375 x 1.315	300 2.07	33 1.299
65 x 25 3OD x 1	76.1 x 33.7 3.00 x 1.315	300 2.07	24 0.945
80 x 15 3 x 1/2	88.9 x 21.3 3.50 x 0.83	300 2.07	24 0.945
85 x 25 3 x 1	88.9 x 33.7 3.50 x 1.315	300 2.07	24 0.945
100 x 25 4 x 1	114.3 x 33.7 4.50 x 1.315	300 2.07	25 0.984
150 x 25 6 1/2 OD x 1	165.1 x 33.7 6.50 x 1.315	300 2.07	25 0.984

XGQT09

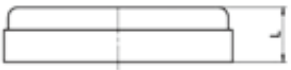
Cap



Nominal Size mm/in	Pipe O.D mm/in	Working Pressure PSI/MPa	Dimension L mm/in
25	33.7	300	24
1	1.315	2.07	0.945
32	42.4	300	24
1 1/4	1.66	2.07	0.945
40	48.3	300	24
1 1/2	1.9	2.07	0.945
50	60.3	300	24
2	2.375	2.07	0.945
65	73	300	24
2 1/2	2.875	2.07	0.945
65	76.1	300	24
3OD	3	2.07	0.945
80	88.9	300	24
3	3.5	2.07	0.945
100	108	300	27
4 1/4 OD	4.25	2.07	1.063
100	114.3	300	27
4	4.5	2.07	1.063
125	139.7	300	27
5 1/2 OD	5.5	2.07	1.063
150	165.1	300	27
6 1/2 OD	6.5	2.07	1.063
150	168.3	300	27
6	6.625	2.07	1.063
200	219.1	300	30
8	8.625	2.07	1.181
250	273	300	32
10	10.75	2.07	1.260
300	323.9	300	32
12	12.75	2.07	1.260

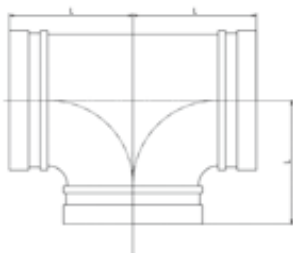
XGQT05S

Cap with Eccentric Hole



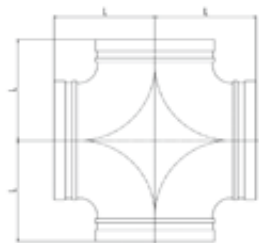
Nominal Size mm/in	Pipe O.D mm/in	Working Pressure PSI/MPa	Dimension L mm/in
65 × 25	73 × 33.7	300	24
2 1/2 × 1	2.875 × 1.315	2.07	0.945
65 × 25	76.1 × 33.7	300	24
3OD × 1	3.0 × 1.315	2.07	0.945
65 × 40	76.1 × 48.3	300	24
3OD × 1 1/2	3.0 × 1.9	2.07	0.945
65 × 50	76.1 × 60.3	300	24
3OD × 2	3.0 × 2.375	2.07	0.945
80 × 25	88.9 × 33.7	300	24
3 × 1	3.5 × 1.315	2.07	0.945
80 × 40	88.9 × 48.3	300	24
3 × 1 1/2	3.5 × 1.9	2.07	0.945
80 × 50	88.9 × 60.3	300	24
3 × 2	3.5 × 2.375	2.07	0.945
100 × 25	114.3 × 33.7	300	25
4 × 1	4.5 × 1.315	2.07	0.984
100 × 40	114.3 × 48.3	300	25
4 × 1 1/2	4.5 × 1.9	2.07	0.984
100 × 50	114.3 × 60.3	300	25
4 × 2	4.5 × 2.375	2.07	0.984
125 × 50	139.7 × 60.3	300	26
5 1/2 OD × 2	5.5 × 2.375	2.07	1.024
150 × 50	168.3 × 60.3	300	26
6 × 2	6.625 × 2.375	2.07	1.024
200 × 50	219.1 × 60.3	300	30
8 × 2	8.625 × 2.375	2.07	1.181

XGQT03
Equal Tee



Nominal Size mm/in	Pipe O.D mm/in	Working Pressure PSI/MPa	Dimension L mm/in	
			Standard	Short
25	33.7	300	57	57
1	1.315	2.07	2.244	2.244
32	42.4	300	70	60
1 1/4	1.66	2.07	2.756	2.362
40	48.3	300	70	60
1 1/2	1.9	2.07	2.756	2.362
50	60.3	300	83	70
2	2.375	2.07	3.268	2.756
65	73	300	95	76
2 1/2	2.875	2.07	3.740	2.992
65	76.1	300	95	76
3OD	3	2.07	3.740	2.992
80	88.9	300	108	86
3	3.5	2.07	4.252	3.386
100	114.3	300	127	102
4	4.5	2.07	5.000	4.016
125	139.7	300	140	122
5 1/2 OD	5.5	2.07	5.512	4.803
150	165.1	300	165	140
6 1/2 OD	6.5	2.07	6.496	5.512
150	168.3	300	165	140
6	6.625	2.07	6.496	5.512
200	219.1	300	197	163
8	8.625	2.07	7.756	6.417
250	273	300	190	190
10	10.75	2.07	7.480	7.480
300	323.9	300	220	220
12	12.75	2.07	8.661	8.661

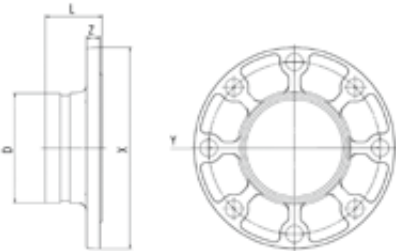
XGQT14
Equal Cross



Nominal Size mm/in	Pipe O.D mm/in	Working Pressure PSI/MPa	Dimension L mm/in
32	42.4	300	60
1 1/4	1.66	2.07	2.362
40	48.3	300	60
1 1/2	1.9	2.07	2.362
50	60.3	300	70
2	2.375	2.07	2.756
65	73	300	76
2 1/2	2.875	2.07	2.992
65	76.1	300	76
3OD	3	2.07	2.992
80	88.9	300	86
3	3.5	2.07	3.386
100	114.3	300	102
4	4.5	2.07	4.016
125	139.7	300	122
5 1/2 OD	5.5	2.07	4.803
150	165.1	300	140
6 1/2 OD	6.5	2.07	5.512
150	168.3	300	140
6	6.625	2.07	5.512
200	219.1	300	175
8	8.625	2.07	6.890
250	273	300	215
10	10.75	2.07	8.465
300	323.9	300	245
12	12.75	2.07	9646

XGQT08

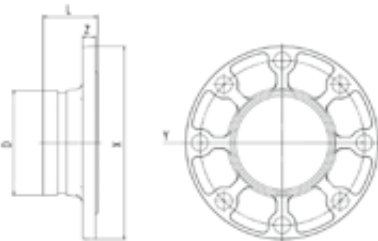
Grooved Flange Adaptor
Class150



Nominal Size mm/in	Pipe O.D mm/in	Working Pressure PSI/MPa	Dimension				Bolt/Nut
			L	X	Y	Z	
			mm/in	mm/in	mm/in	mm/in	
50	60.3	300	65	155	121	16	4-M16
2	2.375	2.07	2.559	6.102	4.764	0.630	
65	73	300	65	180	140	16	4-M16
2 1/2	2.875	2.07	2.559	7.087	5.512	0.630	
80	88.9	300	65	190	153	16	8-M16
3	3.5	2.07	2.559	7.480	6.024	0.630	
100	114.3	300	70	230	191	17	8-M16
4	4.5	2.07	2.756	9.055	7.520	0.669	
125	141.3	300	70	257	216	18	8-M16
5	5.563	2.07	2.756	10.118	8.504	0.630	
150	168.3	300	70	285	241	19	8-M20
6	6.625	2.07	2.756	11.220	9.488	0.748	
200	219.1	300	76	345	299	19	8-M20
8	8.625	2.07	2.992	13.583	11.772	0.748	
250	273	300	85	406	362	21	12-M24
10	10.75	2.07	3.346	15.984	14.252	0.827	
300	323.9	300	90	485	432	25	12-M24
12	12.75	2.07	3.543	19.094	17.008	0.984	

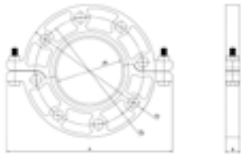
XGQT08

Grooved Flange Adaptor
PN16



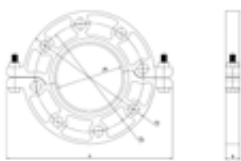
Nominal Size mm/in	Pipe O.D mm/in	Working Pressure PSI/MPa	Dimension				Bolt/Nut
			L	X	Y	Z	
			mm/in	mm/in	mm/in	mm/in	
50	60.3	232	67	164	125	17	4-M16
2	2.375	1.6	2.638	6.457	4.921	0.669	
65	73	232	65	184	145	17	4-M16
2 1/2	2.875	1.6	2.559	7.244	5.709	0.669	
65	76.1	232	65	184	145	16	4-M16
3OD	3	1.6	2.559	7.244	5.709	0.630	
80	88.9	232	65	200	160	17	8-M16
3	3.5	1.6	2.559	7.874	6.299	0.669	
100	108	232	63	210	180	15	8-M16
4 1/4 OD	4.25	1.6	2.480	8.268	7.087	0.591	
100	114.3	232	70	219	180	17	8-M16
4	4.5	1.6	2.756	8.622	7.087	0.669	
125	133	232	70	250	210	18	8-M16
5 1/4 OD	5.25	1.6	2.756	9.843	8.268	0.709	
125	139.7	232	70	250	210	18	8-M16
5 1/2 OD	5.5	1.6	2.756	9.843	8.268	0.709	
125	141.3	232	70	250	210	18	8-M16
5	5.563	1.6	2.756	9.843	8.268	0.709	
150	159	232	70	285	240	18	8-M20
6 1/4 OD	6.25	1.6	2.756	11.220	9.449	0.709	
150	165.1	232	70	286	240	18	8-M20
6 1/2 OD	6.5	1.6	2.756	11.260	9.449	0.709	
150	168.3	232	70	285	240	18	8-M20
6	6.625	1.6	2.756	11.220	9.449	0.709	
200	219.1	232	80	341	295	19	12-M20
8	8.625	1.6	3.150	13.425	11.614	0.748	
250	273	232	78	402	355	22	12-M24
10	10.75	1.6	3.071	15.827	13.976	0.866	
300	323.9	232	90	450	410	25	12-M24
12	12.75	1.6	3.543	17.717	16.142	0.984	

XGQT8
Flange Coupling (Grooved Flange)
Class150



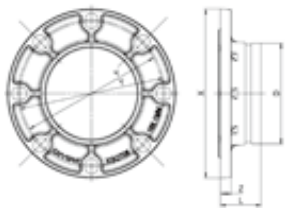
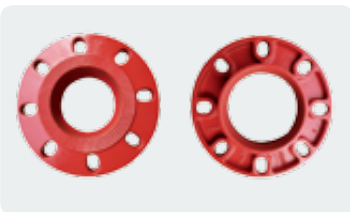
Nominal Size mm/in	Pipe O.D mm/in	Working Pressure PSI/MPa	Dimension					Bolt/Nut
			A	B	C	D	E	
			mm/in	mm/in	mm/in	mm/in	mm/in	
50	60.3	300	210	24	157	121	56.8	4-M16
2	2.375	2.07	8.268	0.945	6.181	4.764	2.236	
65	73	300	232	24	181	140	68.5	4-M16
2 1/2	2.875	2.07	9.134	0.945	7.126	5.512	2.697	
80	88.9	300	248	24	192	152	84.8	4-M16
3	3.5	2.07	9.764	0.945	7.559	5.984	3.339	
100	114.3	300	284	25	231	191	109.5	8-M16
4	4.5	2.07	11.181	0.984	9.094	7.520	4.311	
125	141.3	300	321	25	255	216	137.2	8-M20
5	5.563	2.07	12.638	0.984	10.039	8.504	5.402	
150	168.3	300	344	25	286	242	163.3	8-M20
6	6.625	2.07	13.543	0.984	11.260	9.528	6.429	
200	219.1	300	404	30	342	298	214	8-M20
8	8.625	2.07	15.906	1.181	13.465	11.732	8.425	

XGQT8
Flange Coupling (Grooved Flange)
PN16



Nominal Size mm/in	Pipe O.D mm/in	Working Pressure PSI/MPa	Dimension					Bolt/Nut
			A	B	C	D	E	
			mm/in	mm/in	mm/in	mm/in	mm/in	
50	60.3	232	210	24	166	125	56.8	4-M16
2	2.375	1.6	8.268	0.945	6.535	4.921	2.236	
65	73	232	232	24	181	145	68.5	4-M16
2 1/2	2.875	1.6	9.134	0.945	7.126	5.709	2.697	
65	76.1	232	242	24	186	145	72	4-M16
3OD	3	1.6	9.528	0.945	7.323	5.709	2.835	
80	88.9	232	256	24	200	160	84.8	8-M16
3	3.5	1.6	10.079	0.945	7.874	6.299	3.339	
100	114.3	232	277	24	222	180	109.5	8-M16
4	4.5	1.6	10.906	0.945	8.740	7.087	4.311	
125	139.7	232	300	24	252	210	135.3	8-M16
5 1/2 OD	5.5	1.6	11.811	0.945	9.921	8.268	5.327	
125	141.3	232	325	24	254	210	136.7	8-M16
5	5.563	1.6	12.795	0.945	10.000	8.268	5.382	
150	165.1	232	350	25	285	240	160.3	8-M20
6 1/2 OD	6.5	1.6	13.780	0.984	11.220	9.449	6.311	
150	168.3	232	350	25	287	240	163.3	8-M20
6	6.625	1.6	13.780	0.984	11.299	9.449	6.429	
200	219.1	232	418	30	342	295	214	12-M20
8	8.625	1.6	16.457	1.181	13.465	11.614	8.425	

Universal Flange Adapter

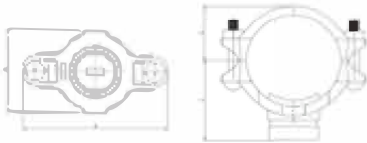


Nominal Size mm in	Pipe O.D mm in	Working Pressure PSI/MPa	L mm in	X mm in	Y: Flange Drilling					Bolt Size	
					ANSI	PN	JIS	BS	Z	Dia	No.
					mm in	mm in	mm in	mm in	mm in	mm in	mm in
50	60.3	232	65	165	121	125	120	114	16	M16	4
2	2.375	1.6	2.56	6.50	4.75	4.92	4.72	4.49	0.63	5/8	
65	73	232	65	185	140	145	140	127	16	M16	4
2 1/2	2.875	1.6	2.56	7.28	5.50	5.70	5.50	5.00	0.63	5/8	
76.1	76.1	232	65	185	140	145	140	127	16	M16	4
3.000	3.000	1.6	2.56	7.28	5.50	5.70	5.50	5.00	0.63	5/8	
80	88.9	232	65	200	152	160	150	146	16	M16	4/8
3	3.500	1.6	2.56	7.87	6.00	6.30	5.90	5.75	0.63	5/8	
100	114.3	232	70	225	191	180	175	178	16	M16	8
4	4.500	1.6	2.76	8.86	7.50	7.09	6.89	7.00	0.63	5/8	
139.7	139.7	232	70	254.00	216	210	210	210.00	16	M16/M20	8
mm	5.500	1.6	2.76	10.00	8.50	8.27	8.27	8.27	0.63	5/8 / 3/4	
125	141.3	232	70	254.00	216	210	210		22	M16/M20	8
5	5.563	1.6	2.76	10.00	8.50	8.27	8.27		0.87	5/8 / 3/4	
165.1	165.1	232	70	275	241	240	240	235	18	M20	8
mm	6.500	1.6	2.76	10.83	9.50	9.45	9.45	9.30	0.87	3/4	
150	168.3	232	70	276	241	240	240		22	M20	8
6	6.625	1.6	2.76	10.86	9.50	9.45	9.45		0.87	3/4	
200	219.1	232	80	343	298	295	290	292	22	M20	8/12
8	8.625	1.6	3.15	13.50	11.75	11.61	11.42	11.50	0.87	3/4	

XGQT3

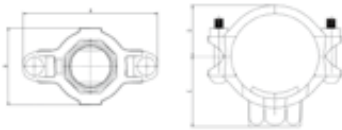
Mechanical Tee

Grooved Outlet



Nominal Size mm/in	Pipe O.D mm/in	Working Pressure PSI/MPa	Hole Dia mm/in +1.5,0/ +0.063,0	Dimension				Bolt/Nut
				A mm/in	B mm/in	C mm/in	D mm/in	
50 x 25 2 x 1	60.3 x 33.7 2.375 x 1.315	300	38 1.496	114 4.488	69 2.717	67 2.638	38 1.496	10*60
50 x 32	60.3 x 42.4	300	46	114	77	67	38	10*60
50 x 40	60.3 x 48.3	300	46	114	77	67	38	10*60
50 x 25 2 x 1/2	2.375 x 1.900	2.07	1.811	4.488	3.031	2.638	1.496	10*60
65 x 25	73 x 33.7	300	38	126	70	74	46	10*65
2 1/2 x 1	2.875 x 1.315	2.07	1.496	4.961	2.756	2.913	1.811	10*65
65 x 32	73 x 42.4	300	46	126	77	74	46	10*65
2 1/2 x 1 1/4	2.875 x 1.660	2.07	1.811	4.961	3.031	2.913	1.811	10*65
65 x 40	73 x 48.3	300	46	127	78	74	46	10*65
2 1/2 x 1 1/2	2.875 x 1.900	2.07	1.811	5.000	3.071	2.913	1.811	10*65
65 x 50	73 x 60.3	300	46	127	78	74	46	10*65
2 1/2 x 2	2.875 x 2.375	2.07	1.811	5.000	3.071	2.913	1.811	10*65
65 x 25 3OD x 1	76.1 x 33.7 3.000 x 1.315	300 2.07	38 1.496	130 5.118	69 2.717	74 2.913	47 1.850	10*65
65 x 32	76.1 x 42.4	300	46	130	77	74	47	10*65
3OD x 1 1/4	3.000 x 1.660	2.07	1.811	5.118	3.031	2.913	1.850	10*65
65 x 40	76.1 x 48.3	300	46	130	77	74	47	10*65
3OD x 1 1/2	3.000 x 1.900	2.07	1.811	5.118	3.031	2.913	1.850	10*65
65 x 50	76.1 x 60.3	300	51	130	88	76	47	10*65
3OD x 2	3.000 x 2.375	2.07	2.008	5.118	3.465	2.992	1.850	10*65
80 x 25	88.9 x 33.7	300	38	147	73	74	54	12*75
3 x 1	3.500 x 1.315	2.07	1.496	5.787	2.874	2.913	2.126	12*75
80 x 32	88.9 x 42.4	300	51	147	87	84	54	12*75
3 x 1 1/4	3.500 x 1.660	2.07	2.008	5.787	3.425	3.307	2.126	12*75
80 x 40	88.9 x 48.3	300	51	147	87	84	54	12*75
3 x 1 1/2	3.500 x 1.900	2.07	2.008	5.787	3.425	3.307	2.126	12*75
80 x 50	88.9 x 60.3	300	64	147	100	84	54	12*75
3 x 2	3.500 x 2.375	2.07	2.520	5.787	3.937	3.307	2.126	12*75
100 x 25	114.3 x 33.7	300	38	177	73	96	67	12*75
4 x 1	4.500 x 1.315	2.07	1.496	6.969	2.874	3.780	2.638	12*75
100 x 32	114.3 x 42.4	300	51	177	87	96	67	12*75
4 x 1 1/4	4.500 x 1.660	2.07	2.008	6.969	3.425	3.780	2.638	12*75
100 x 40	114.3 x 48.3	300	51	177	87	96	67	12*75
4 x 1 1/2	4.500 x 1.900	2.07	2.008	6.969	3.425	3.780	2.638	12*75
100 x 50	114.3 x 60.3	300	64	177	102	96	67	12*75
4 x 2	4.500 x 2.375	2.07	2.520	6.969	4.016	3.780	2.638	12*75
100 x 65	114.3 x 73	300	70	177	109	96	67	12*75
4 x 2 1/2	4.500 x 2.875	2.07	2.756	6.969	4.291	3.780	2.638	12*75
100 x 80	114.3 x 88.9	300	86	177	123	98	67	12*75
4 x 3	4.500 x 3.500	2.07	3.386	6.969	4.843	3.858	2.638	12*75
125 x 50	139.7 x 60.3	300	64	211	102	108	79	16*100
5 1/2 OD x 2	5.500 x 2.375	2.07	2.520	8.307	4.016	4.252	3.110	16*100
125 x 65	139.7 x 76.1	300	70	211	110	108	79	16*100
5 1/2 OD x 3OD	5.500 x 3.000	2.07	2.756	8.307	4.331	4.252	3.110	16*100
125 x 80	139.7 x 88.9	300	89	211	130	108	79	16*100
5 1/2 OD x 3	5.500 x 3.500	2.07	3.504	8.307	5.118	4.252	3.110	16*100
150 x 25	165.1 x 33.7	300	38	237	75	111	91	16*110
6 1/2 OD x 1	6.500 x 1.315	2.07	1.496	9.331	2.953	4.370	3.583	16*110
150 x 32	165.1 x 42.4	300	51	237	89	111	91	16*110
6 1/2 OD x 1 1/4	6.500 x 1.660	2.07	2.008	9.331	3.504	4.370	3.583	16*110
150 x 40	165.1 x 48.3	300	51	237	89	111	91	16*110
6 1/2 OD x 1 1/2	6.500 x 1.900	2.07	2.008	9.331	3.504	4.370	3.583	16*110
150 x 50	165.1 x 60.3	300	64	237	103	117	91	16*110
6 1/2 OD x 2	6.500 x 2.375	2.07	2.520	9.331	4.055	4.606	3.583	16*110
150 x 65	165.1 x 73	300	70	237	111	123	91	16*110
6 1/2 OD x 2 1/2	6.500 x 2.875	2.07	2.756	9.331	4.370	4.843	3.583	16*110
150 x 65	165.1 x 76.1	300	70	237	111	123	91	16*110
6 1/2 OD x 3OD	6.500 x 3.000	2.07	2.756	9.331	4.370	4.843	3.583	16*110
150 x 80	165.1 x 88.9	300	89	237	131	123	91	16*110
6 1/2 OD x 3	6.500 x 3.500	2.07	3.504	9.331	5.157	4.843	3.583	16*110
150 x 100	165.1 x 114.3	300	114	237	160	123	91	16*110
6 1/2 OD x 4	6.500 x 4.500	2.07	4.488	9.331	6.299	4.843	3.583	16*110
150 x 25	168.3 x 33.7	300	38	239	76	123	93	16*110
6 x 1	6.500 x 1.315	2.07	1.496	9.409	2.992	4.843	3.661	16*110
150 x 32	168.3 x 42.4	300	51	239	89	123	93	16*110
6 x 1 1/4	6.625 x 1.660	2.07	2.008	9.409	3.504	4.843	3.661	16*110
150 x 40	168.3 x 48.3	300	51	239	89	123	93	16*110
6 x 1 1/2	6.625 x 1.900	2.07	2.008	9.409	3.504	4.843	3.661	16*110
150 x 50	168.3 x 60.3	300	64	239	103	122	93	16*110
6 x 2	6.625 x 2.375	2.07	2.520	9.409	4.055	4.803	3.661	16*110
150 x 65	168.3 x 73	300	70	239	111	122	93	16*110
6 x 2 1/2	6.625 x 2.875	2.07	2.756	9.409	4.370	4.803	3.661	16*110
150 x 65	168.3 x 76.1	300	70	239	111	122	93	16*110
6 x 3OD	6.625 x 3.000	2.07	2.756	9.409	4.370	4.803	3.661	16*110
150 x 80	168.3 x 88.9	300	89	239	131	122	93	16*110
6 x 3	6.625 x 3.500	2.07	3.504	9.409	5.157	4.803	3.661	16*110
150 x 100	168.3 x 114.3	300	114	239	160	127	93	16*110
6 x 4	6.625 x 4.500	2.07	4.488	9.409	6.299	5.000	3.661	16*110
200 x 25	219.1 x 33.7	300	38	305	77	150	121	16*110
8 x 1	8.625 x 1.315	2.07	1.496	12.008	3.031	5.906	4.764	16*110
200 x 32	219.1 x 42.4	300	51	305	90	150	121	16*110
8 x 1 1/4	8.625 x 1.660	2.07	2.008	12.008	3.543	5.906	4.764	16*110
200 x 40	219.1 x 48.3	300	51	305	90	150	121	16*110
8 x 1 1/2	8.625 x 1.900	2.07	2.008	12.008	3.543	5.906	4.764	16*110
200 x 50	219.1 x 60.3	300	64	305	110	150	121	16*110
8 x 2	8.625 x 2.375	2.07	2.520	12.008	4.331	5.906	4.764	16*110
200 x 65	219.1 x 73	300	70	305	117	150	121	16*110
8 x 2 1/2	8.625 x 2.875	2.07	2.756	12.008	4.606	5.906	4.764	16*110
200 x 65	219.1 x 76.1	300	70	305	117	150	121	16*110
8 x 3OD	8.625 x 3.000	2.07	2.756	12.008	4.606	5.906	4.764	16*110
200 x 80	219.1 x 88.9	300	89	305	137	150	121	16*110
8 x 3	8.625 x 3.500	2.07	3.504	12.008	5.394	5.906	4.764	16*110
200 x 100	219.1 x 114.3	300	114	305	164	155	121	16*110
8 x 4	8.625 x 4.500	2.07	4.488	12.008	6.457	6.102	4.764	16*110

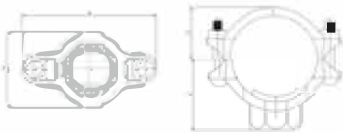
XGQT3S
Mechanical Tee
Threaded Outlet



Nominal Size mm/in	Pipe O.D mm/in	Working Pressure PSI/MPa	Hole Dia mm/in <small>+1.6.0/ +0.063.0</small>	Dimension				Bolt/Nut
				A mm/in	B mm/in	C mm/in	D mm/in	
32 x 25 1 1/4 x 1	42.4 x 33.7 1.669 x 1.315	300 2.07	30 1.181	99 3.898	57 2.244	50 1.969	28 1.102	10*55
40 x 25 1 1/2 x 1	48.3 x 33.7 1.90 x 1.315	300 2.07	30 1.181	99.5 3.917	57 2.244	53 2.087	30 1.181	10*55
50 x 15 2 x 1/2	60.3 x 21.3 2.375 x 0.825	300 2.07	38 1.496	114 4.488	70 2.756	59 2.323	39 1.535	10*60
50 x 20 2 x 3/4	60.3 x 26.9 2.375 x 1.050	300 2.07	38 1.496	114 4.488	70 2.756	59 2.323	39 1.535	10*60
50 x 25 2 x 1	60.3 x 33.7 2.375 x 1.315	300 2.07	38 1.496	114 4.488	70 2.756	59 2.323	39 1.535	10*60
50 x 32 2 x 1 1/4	60.3 x 42.4 2.375 x 1.660	300 2.07	46 1.811	114 4.488	77 3.031	59 2.323	39 1.535	10*60
50 x 40 2 x 1 1/2	60.3 x 48.3 2.375 x 1.900	300 2.07	46 1.811	114 4.488	77 3.031	59 2.323	39 1.535	10*60
65 x 15 2 1/2 x 1/2	73 x 21.3 2.875 x 0.825	300 2.07	38 1.496	126 4.961	70 2.756	65 2.559	45 1.772	10*65
65 x 20 2 1/2 x 3/4	73 x 26.9 2.875 x 1.050	300 2.07	38 1.496	126 4.961	70 2.756	65 2.559	45 1.772	10*65
65 x 25 2 1/2 x 1	73 x 33.7 2.875 x 1.315	300 2.07	38 1.496	126 4.961	70 2.756	66 2.598	45 1.772	10*65
65 x 32 2 1/2 x 1 1/4	73 x 42.4 2.875 x 1.660	300 2.07	46 1.811	126 4.961	78 3.071	66 2.598	45 1.772	10*65
65 x 40 2 1/2 x 1 1/2	73 x 48.3 2.875 x 1.900	300 2.07	46 1.811	126 4.961	78 3.071	66 2.598	45 1.772	10*65
65 x 15 3OD x 1/2	76.1 x 21.3 3.000 x 0.825	300 2.07	38 1.496	130 5.118	70 2.756	67 2.638	47 1.850	10*65
65 x 20 3OD x 3/4	76.1 x 26.9 3.000 x 1.050	300 2.07	38 1.496	130 5.118	70 2.756	67 2.638	47 1.850	10*65
65 x 25 3OD x 1	76.1 x 33.7 3.000 x 1.315	300 2.07	38 1.496	130 5.118	70 2.756	67 2.638	47 1.850	10*65
65 x 32 3OD x 1 1/4	76.1 x 42.4 3.000 x 1.660	300 2.07	46 1.811	130 5.118	77 3.031	69 2.717	47 1.850	10*65
65 x 40 3OD x 1 1/2	76.1 x 48.3 3.000 x 1.900	300 2.07	46 1.811	130 5.118	77 3.031	69 2.717	47 1.850	10*65
65 x 50 3OD x 2	76.1 x 60.3 3.000 x 2.375	300 2.07	51 2.008	130 5.118	88 3.465	74 2.913	47 1.850	10*65
80 x 15 3 x 1/2	88.9 x 21.3 3.500 x 0.825	300 2.07	38 1.496	148 5.827	72 2.835	75 2.953	54 2.126	12*75
80 x 20 3 x 3/4	88.9 x 26.9 3.500 x 1.050	300 2.07	38 1.496	148 5.827	72 2.835	75 2.953	54 2.126	12*75
80 x 25 3 x 1	88.9 x 33.7 3.500 x 1.315	300 2.07	38 1.496	148 5.827	72 2.835	75 2.953	54 2.126	12*75
80 x 32 3 x 1 1/4	88.9 x 42.4 3.500 x 1.660	300 2.07	51 2.008	148 5.827	87 3.425	75 2.953	54 2.126	12*75
80 x 40 3 x 1 1/2	88.9 x 48.3 3.500 x 1.900	300 2.07	51 2.008	148 5.827	87 3.425	75 2.953	54 2.126	12*75
80 x 50 3 x 2	88.9 x 60.3 3.500 x 2.375	300 2.07	64 2.520	148 5.827	100 3.937	79 3.110	54 2.126	12*75
100 x 15 4 x 1/2	114.3 x 21.3 4.500 x 0.825	300 2.07	38 1.496	177 6.969	72 2.835	87 3.425	67 2.638	12*75
100 x 20 4 x 3/4	114.3 x 26.9 4.500 x 1.050	300 2.07	38 1.496	177 6.969	72 2.835	87 3.425	67 2.638	12*75
100 x 25 4 x 1	114.3 x 33.7 4.500 x 1.315	300 2.07	38 1.496	177 6.969	72 2.835	87 3.425	67 2.638	12*75
100 x 32 4 x 1 1/4	114.3 x 42.4 4.500 x 1.660	300 2.07	51 2.008	177 6.969	87 3.425	87 3.425	67 2.638	12*75
100 x 40 4 x 1 1/2	114.3 x 48.3 4.500 x 1.900	300 2.07	51 2.008	177 6.969	87 3.425	87 3.425	67 2.638	12*75
100 x 50 4 x 2	114.3 x 60.3 4.500 x 2.375	300 2.07	64 2.520	177 6.969	102 4.016	93 3.661	67 2.638	12*75
100 x 65 4 x 2 1/2	114.3 x 73 4.500 x 2.875	300 2.07	70 2.756	177 6.969	110 4.331	97 3.819	67 2.638	12*75
100 x 80 4 x 3	114.3 x 88.9 4.500 x 3.500	300 2.07	86 3.386	177 6.969	123 4.843	98 3.858	67 2.638	12*75
125 x 25 5 1/2 OD x 1	139.7 x 33.7 5.500 x 1.315	300 2.07	38 1.496	210 8.268	75 2.953	100 3.937	79 3.110	16*100
125 x 32 5 1/2 OD x 1 1/4	139.7 x 42.4 5.500 x 1.660	300 2.07	51 2.008	210 8.268	88 3.465	100 3.937	79 3.110	16*100
125 x 40 5 1/2 OD x 1 1/2	139.7 x 48.3 5.500 x 1.900	300 2.07	51 2.008	210 8.268	88 3.465	100 3.937	79 3.110	16*100
125 x 50 5 1/2 OD x 2	139.7 x 60.3 5.500 x 2.375	300 2.07	64 2.520	210 8.268	103 4.055	105 4.134	79 3.110	16*100
125 x 65 5 1/2 OD x 3OD	139.7 x 76.1 5.500 x 3.000	300 2.07	70 2.756	210 8.268	110 4.331	111 4.370	79 3.11	16*100
125 x 80 5 1/2 OD x 3	139.7 x 88.9 5.500 x 3.500	300 2.07	89 3.504	210 8.268	131 5.157	114 4.488	79 3.110	16*100
150 x 25 6 1/2 OD x 1	165.1 x 33.7 6.500 x 1.315	300 2.07	38 1.496	236 9.291	75 2.953	112 4.409	91 3.583	16*110
150 x 32 6 1/2 OD x 1 1/4	165.1 x 42.4 6.500 x 1.660	300 2.07	51 2.008	236 9.291	89 3.504	112 4.409	91 3.583	16*110
150 x 40 6 1/2 OD x 1 1/2	165.1 x 48.3 6.500 x 1.900	300 2.07	51 2.008	236 9.291	89 3.504	112 4.409	91 3.583	16*110

XGQT3S

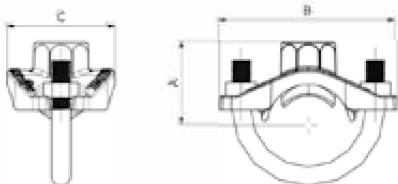
Mechanical Tee
Threaded Outlet



Nominal Size mm/in	Pipe O.D mm/in	Working Pressure PSI/MPa	Hole Dia mm/in <small>+1.6,0/ +0.063,0</small>	Dimension				Bolt/Nut
				A mm/in	B mm/in	C mm/in	D mm/in	
150 × 50 6 1/2 OD × 2	165.1 × 60.3 6.500 × 2.375	300 2.07	64 2.520	236 9.291	103 4.055	117 4.606	91 3.583	16*110
150 × 65 6 1/2 OD × 2 1/2	165.1 × 73 6.500 × 2.875	300 2.07	70 2.756	236 9.291	111 4.370	122 4.803	91 3.583	16*110
150 × 65 6 1/2 OD × 3 OD	165.1 × 76.1 6.500 × 3.000	300 2.07	70 2.756	236 9.291	111 4.370	122 4.803	91 3.583	16*110
150 × 80 6 1/2 OD × 3	165.1 × 88.9 6.500 × 3.500	300 2.07	89 3.504	236 9.291	131 5.157	123 4.843	91 3.583	16*110
150 × 100 6 1/2 OD × 4	165.1 × 114.3 6.500 × 5.563	300 2.07	114 4.488	236 9.291	160 6.299	123 4.843	91 3.583	16*110
150 × 25 6 × 1	168.3 × 33.7 6.625 × 1.315	300 2.07	38 1.496	239 9.409	76 2.992	114 4.488	93 3.661	16*110
150 × 32 6 × 1 1/4	168.3 × 42.4 6.625 × 1.660	300 2.07	51 2.008	239 9.409	89 3.504	114 4.488	93 3.661	16*110
150 × 40 6 × 1 1/2	168.3 × 48.3 6.625 × 1.900	300 2.07	51 2.008	239 9.409	89 3.504	114 4.488	93 3.661	16*110
150 × 50 6 × 2	168.3 × 60.3 6.625 × 2.375	300 2.07	64 2.520	239 9.409	103 4.055	120 4.724	93 3.661	16*110
150 × 65 6 × 2 1/2	168.3 × 73 6.625 × 2.875	300 2.07	70 2.756	239 9.409	111 4.370	125 4.921	93 3.661	16*110
150 × 65 6 × 3 OD	168.3 × 76.1 6.625 × 3.000	300 2.07	70 2.756	239 9.409	111 4.370	125 4.921	93 3.661	16*110
150 × 80 6 × 3	168.3 × 88.9 6.625 × 3.500	300 2.07	89 3.504	239 9.409	131 5.157	125 4.921	93 3.661	16*110
150 × 100 6 × 4	168.3 × 114.3 6.625 × 4.500	300 2.07	114 4.488	239 9.409	160 6.299	125 4.921	93 3.661	16*110
200 × 25 8 × 1	219.1 × 33.7 8.625 × 1.315	300 2.07	38 1.496	305 12.008	81 3.189	143 5.630	121 4.764	16*110
200 × 32 8 × 1 1/4	219.1 × 42.4 8.625 × 1.660	300 2.07	51 2.008	305 12.008	93 3.661	143 5.630	121 4.764	16*110
200 × 40 8 × 1 1/2	219.1 × 48.3 8.625 × 1.900	300 2.07	51 2.008	305 12.008	93 3.661	143 5.630	121 4.764	16*110
200 × 50 8 × 2	219.1 × 60.3 8.625 × 2.375	300 2.07	64 2.520	305 12.008	110 4.331	148 5.827	121 4.764	16*110
200 × 65 8 × 2 1/2	219.1 × 73 8.625 × 2.875	300 2.07	70 2.756	305 12.008	118 4.646	155 6.102	121 4.764	16*110
200 × 65 8 × 3 OD	219.1 × 76.1 8.625 × 3.000	300 2.07	70 2.756	305 12.008	118 4.646	155 6.102	121 4.764	16*110
200 × 80 8 × 3	219.1 × 88.9 8.625 × 3.500	300 2.07	89 3.504	305 12.008	138 5.433	155 6.102	121 4.764	16*110
200 × 100 8 × 4	219.1 × 114.3 8.625 × 4.500	300 2.07	114 4.488	305 12.008	163 6.417	155 6.102	121 4.764	16*110

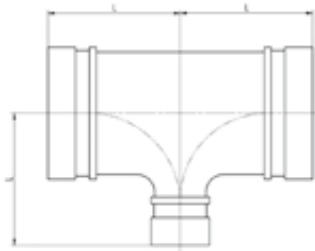
XGQT3U

U-Bolts Mechanical Tee



Nominal Size mm/in	Pipe O.D mm/in	Working Pressure PSI/MPa	Hole Dia mm/in <small>+1.6,0/ +0.063,0</small>	Dimension			Bolt/Nut
				A mm/in	B mm/in	C mm/in	
25 × 15 1 × 1/2	33.7 × 21.3 1.33 × 0.83	300 2.07	24 0.945	36 1.417	85 3.346	50 1.969	10*60
25 × 20 1 × 3/4	33.7 × 26.9 1.33 × 1.05	300 2.07	24 0.945	36 1.417	85 3.346	50 1.969	10*60
32 × 15 1 1/4 × 1/2	42.4 × 21.3 1.66 × 0.83	300 2.07	30 1.181	36 1.417	93 3.661	58 2.283	10*68
32 × 20 1 1/4 × 3/4	42.4 × 26.9 1.66 × 1.05	300 2.07	30 1.181	40 1.575	93 3.661	58 2.283	10*68
32 × 25 1 1/2 × 1	42.4 × 33.7 1.66 × 1.32	300 2.07	35 1.378	43 1.693	93 3.661	58 2.283	10*68
40 × 15 1 1/2 × 1/2	48.3 × 21.3 1.90 × 0.83	300 2.07	30 1.181	36 1.417	93 3.661	58 2.283	10*68
40 × 20 1 1/2 × 3/4	48.3 × 26.9 1.90 × 1.05	300 2.07	30 1.181	40 1.575	93 3.661	58 2.283	10*68
40 × 25 1 1/2 × 1	48.3 × 33.7 1.90 × 1.32	300 2.07	35 1.378	46 1.811	93 3.661	58 2.283	10*68
50 × 15 2 × 1/2	60.3 × 21.3 2.38 × 0.83	300 2.07	35 1.378	36 1.417	98 3.858	58 2.283	10*83
50 × 20 2 × 3/4	60.3 × 26.9 2.38 × 1.05	300 2.07	35 1.378	39 1.535	98 3.858	58 2.283	10*83
50 × 25 2 × 1	60.3 × 33.7 2.38 × 1.32	300 2.07	35 1.378	43 1.693	98 3.858	58 2.283	10*83
65 × 15 2 1/2 × 1/2	73 × 21.3 2.88 × 0.83	300 2.07	35 1.378	36 1.417	112 4.409	58 2.283	10*96
65 × 20 2 1/2 × 3/4	73 × 26.9 2.88 × 1.05	300 2.07	35 1.378	40 1.575	113 4.449	58 2.283	10*96
65 × 25 2 1/2 × 1	73 × 33.7 2.88 × 1.32	300 2.07	35 1.378	44 1.732	113 4.449	58 2.283	10*96
65 × 15 3 OD × 1/2	76.1 × 21.3 3.0 × 0.83	300 2.07	35 1.378	36 1.417	113 4.449	58 2.283	10*96
65 × 20 3 OD × 3/4	76.1 × 26.9 3.0 × 1.05	300 2.07	35 1.378	40 1.575	113 4.449	58 2.283	10*96
65 × 25 3 OD × 1	76.1 × 33.7 3.0 × 1.32	300 2.07	35 1.378	43 1.693	113 4.449	58 2.283	10*96
80 × 25 3 × 1	88.9 × 33.7 3.50 × 1.32	300 2.07	35 1.378	43 1.693	126 4.961	59 2.323	10*115

XGQT13
Grooved Reducing Tee

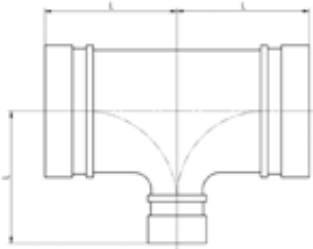


Nominal Size mm/in	Pipe O.D mm/in	Working Pressure PSI/MPa	Dimension L mm/in
32 × 25 1 1/4 × 1	42.4 × 33.7 1.660 × 1.315	300 2.07	60 2.362
40 × 25 1 1/2 × 1	48.3 × 33.7 1.900 × 1.315	300 2.07	60 2.362
40 × 32 1 1/2 × 1 1/4	48.3 × 42.4 1.900 × 1.660	300 2.07	60 2.362
50 × 25 2 × 1	60.3 × 33.7 2.375 × 1.315	300 2.07	70 2.756
50 × 32 2 × 1 1/4	60.3 × 42.4 2.375 × 1.660	300 2.07	70 2.756
50 × 40 2 × 1 1/2	60.3 × 48.3 2.375 × 1.900	300 2.07	70 2.756
65 × 25 2 1/2 × 1	73 × 33.7 2.875 × 1.315	300 2.07	76 2.992
65 × 32 2 1/2 × 1 1/4	73 × 42.4 2.875 × 1.660	300 2.07	76 2.992
65 × 40 2 1/2 × 1 1/2	73 × 48.3 2.875 × 1.900	300 2.07	76 2.992
65 × 50 2 1/2 × 2	73 × 60.3 2.875 × 2.375	300 2.07	76 2.992
65 × 25 3OD × 1	76.1 × 33.7 3.000 × 1.315	300 2.07	76 2.992
65 × 32 3OD × 1 1/4	76.1 × 42.4 3.000 × 1.660	300 2.07	76 2.992
65 × 40 3OD × 1 1/2	76.1 × 48.3 3.000 × 1.900	300 2.07	76 2.992
65 × 50 3OD × 2	76.1 × 60.3 3.000 × 2.375	300 2.07	76 2.992
80 × 25 3 × 1	88.9 × 33.7 3.500 × 1.315	300 2.07	86 3.386
80 × 32 3 × 1 1/4	88.9 × 42.4 3.500 × 1.660	300 2.07	86 3.386
80 × 40 3 × 1 1/2	88.9 × 48.3 3.500 × 1.900	300 2.07	86 3.386
80 × 50 3 × 2	88.9 × 60.3 3.500 × 2.375	300 2.07	86 3.386
80 × 65 3 × 2 1/2	88.9 × 73 3.500 × 2.875	300 2.07	86 3.386
80 × 65 3 × 3OD	88.9 × 76.1 3.500 × 3.000	300 2.07	86 3.386
100 × 25 4 1/4 OD × 1	108 × 33.7 4.250 × 1.315	300 2.07	102 4.016
100 × 32 4 1/4 OD × 1 1/4	108 × 42.4 4.250 × 1.660	300 2.07	102 4.016
100 × 40 4 1/4 OD × 1 1/2	108 × 48.3 4.250 × 1.900	300 2.07	102 4.016
100 × 50 4 1/4 OD × 2	108 × 60.3 4.250 × 2.375	300 2.07	102 4.016
100 × 65 4 1/4 OD × 2 1/2	108 × 73 4.250 × 2.875	300 2.07	102 4.016
100 × 65 4 1/4 OD × 3OD	108 × 76.1 4.250 × 3.000	300 2.07	102 4.016
100 × 80 4 1/4 OD × 3	108 × 88.9 4.250 × 3.500	300 2.07	102 4.016
100 × 25 4 × 1	114.3 × 33.7 4.500 × 1.315	300 2.07	102 4.016
100 × 32 4 × 1 1/4	114.3 × 42.4 4.500 × 1.660	300 2.07	102 4.016
100 × 40 4 × 1 1/2	114.3 × 48.3 4.500 × 1.900	300 2.07	102 4.016
100 × 50 4 × 2	114.3 × 60.3 4.500 × 2.375	300 2.07	102 4.016
100 × 65 4 × 2 1/2	114.3 × 73 4.500 × 2.875	300 2.07	102 4.016
100 × 65 4 × 3OD	114.3 × 76.1 4.500 × 3.000	300 2.07	102 4.016
100 × 80 4 × 3	114.3 × 88.9 4.500 × 3.500	300 2.07	102 4.016

Nominal Size mm/in	Pipe O.D mm/in	Working Pressure PSI/MPa	Dimension L mm/in
125 × 25 5 1/2 OD × 1	139.7 × 33.7 5.500 × 1.315	300 2.07	108 4.252
125 × 32 5 1/2 OD × 1 1/4	139.7 × 42.4 5.500 × 1.660	300 2.07	108 4.252
125 × 40 5 1/2 OD × 1 1/2	139.7 × 48.3 5.500 × 1.900	300 2.07	108 4.252
125 × 50 5 1/2 OD × 2	139.7 × 60.3 5.500 × 2.375	300 2.07	108 4.252
125 × 65 5 1/2 OD × 2 1/2	139.7 × 73 5.500 × 2.875	300 2.07	108 4.252
125 × 65 5 1/2 OD × 3OD	139.7 × 76.1 5.500 × 3.000	300 2.07	108 4.252
125 × 80 5 1/2 OD × 3	139.7 × 88.9 5.500 × 3.500	300 2.07	108 4.252
125 × 100 5 1/2 OD × 4 1/4 OD	139.7 × 108 5.500 × 4.250	300 2.07	108 4.252
125 × 100 5 1/2 OD × 4	139.7 × 114.3 5.500 × 4.500	300 2.07	108 4.252
125 × 25 5 × 1	141.3 × 33.7 5.563 × 1.315	300 2.07	108 4.252
125 × 32 5 × 1 1/4	141.3 × 42.4 5.563 × 1.660	300 2.07	108 4.252
125 × 40 5 × 1 1/2	141.3 × 48.3 5.563 × 1.900	300 2.07	108 4.252
125 × 50 5 × 2	141.3 × 60.3 5.563 × 2.375	300 2.07	108 4.252
125 × 65 5 × 2 1/2	141.3 × 73 5.563 × 2.875	300 2.07	108 4.252
125 × 65 5 × 3OD	141.3 × 76.1 5.563 × 3.000	300 2.07	108 4.252
125 × 80 5 × 3	141.3 × 88.9 5.563 × 3.500	300 2.07	108 4.252
125 × 100 5 × 4 1/4 OD	141.3 × 108 5.563 × 4.250	300 2.07	108 4.252
125 × 100 5 × 4	141.3 × 114.3 5.563 × 4.500	300 2.07	108 4.252
125 × 125 5 × 5 1/4 OD	141.3 × 133 5.563 × 5.250	300 2.07	108 4.252
150 × 25 6 1/4 OD × 1	159 × 33.7 6.250 × 1.315	300 2.07	120 4.724
150 × 32 6 1/4 OD × 1 1/4	159 × 42.4 6.250 × 1.660	300 2.07	120 4.724
150 × 40 6 1/4 OD × 1 1/2	159 × 48.3 6.250 × 1.900	300 2.07	120 4.724
150 × 50 6 1/4 OD × 2	159 × 60.3 6.250 × 2.375	300 2.07	120 4.724
150 × 65 6 1/4 OD × 2 1/2	159 × 73 6.250 × 2.875	300 2.07	120 4.724
150 × 65 6 1/4 OD × 3OD	159 × 76.1 6.250 × 3.000	300 2.07	120 4.724
150 × 80 6 1/4 OD × 3	159 × 88.9 6.250 × 3.500	300 2.07	120 4.724
150 × 100 6 1/4 OD × 4 1/4 OD	159 × 108 6.250 × 4.250	300 2.07	120 4.724
150 × 100 6 1/4 OD × 4	159 × 114.3 6.250 × 4.500	300 2.07	120 4.724
150 × 125 6 1/4 OD × 5 1/4 OD	159 × 133 6.250 × 5.250	300 2.07	120 4.724
150 × 125 6 1/4 OD × 5 1/2 OD	159 × 139.7 6.250 × 5.500	300 2.07	120 4.724
150 × 125 6 1/4 OD × 5	159 × 141.3 6.250 × 5.563	300 2.07	120 4.724
150 × 25 6 1/2 OD × 1	165.1 × 33.7 6.500 × 1.315	300 2.07	140 5.512
150 × 32 6 1/2 OD × 1 1/4	165.1 × 42.4 6.500 × 1.660	300 2.07	140 5.512
150 × 40 6 1/2 OD × 1 1/2	165.1 × 48.3 6.500 × 1.900	300 2.07	140 5.512

XGQT13

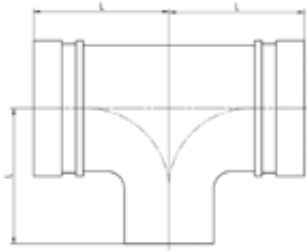
Grooved Reducing Tee



Nominal Size mm/in	Pipe O.D mm/in	Working Pressure PSI/MPa	Dimension L mm/in
150×50 6½ OD×2	165.1×60.3 6.500×2.375	300 2.07	140 5.512
150×65 6½ OD×2½	165.1×73 6.500×2.875	300 2.07	140 5.512
150×65 6½ OD×3OD	165.1×76.1 6.500×3.000	300 2.07	140 5.512
150×80 6½ OD×3	165.1×88.9 6.500×3.500	300 2.07	140 5.512
150×100 6½ OD×4½ OD	165.1×108 6.500×4.250	300 2.07	140 5.512
150×100 6½ OD×4	165.1×114.3 6.500×4.500	300 2.07	140 5.512
150×125 6½ OD×5½ OD	165.1×133 6.500×5.250	300 2.07	140 5.512
150×125 6½ OD×5	165.1×139.7 6.500×5.500	300 2.07	140 5.512
150×125 6½ OD×5	165.1×141.3 6.500×5.563	300 2.07	140 5.512
150×25 6×1	168.3×33.7 6.625×1.315	300 2.07	140 5.512
150×32 6×1¼	168.3×42.4 6.625×1.660	300 2.07	140 5.512
150×40 6×1½	168.3×48.3 6.625×1.900	300 2.07	140 5.512
150×50 6×2	168.3×60.3 6.625×2.375	300 2.07	140 5.512
150×65 6×2½	168.3×73 6.625×2.875	300 2.07	140 5.512
150×65 6×3OD	168.3×76.1 6.625×3.000	300 2.07	140 5.512
150×80 6×3	168.3×88.9 6.625×3.500	300 2.07	140 5.512
150×100 6×4½ OD	168.3×108 6.625×4.250	300 2.07	140 5.512
150×100 6×4	168.3×114.3 6.625×4.500	300 2.07	140 5.512
150×125 6×5½ OD	168.3×133 6.625×5.250	300 2.07	140 5.512
150×125 6×5½ OD	168.3×139.7 6.625×5.500	300 2.07	140 5.512
150×125 6×5	168.3×141.3 6.625×5.563	300 2.07	140 5.512
200×25 8×1	219.1×33.7 8.625×1.315	300 2.07	150 5.906
200×32 8×1¼	219.1×42.4 8.625×1.660	300 2.07	150 5.906
200×40 8×1½	219.1×48.3 8.625×1.900	300 2.07	150 5.906
200×50 8×2	219.1×60.3 8.625×2.375	300 2.07	150 5.906
200×65 8×2½	219.1×73 8.625×2.875	300 2.07	150 5.906
200×65 8×3OD	219.1×76.1 8.625×3.000	300 2.07	150 5.906
200×80 8×3	219.1×88.9 8.625×3.500	300 2.07	150 5.906
200×100 8×4½ OD	219.1×108 8.625×4.250	300 2.07	150 5.906
200×100 8×4	219.1×114.3 8.625×4.500	300 2.07	150 5.906
200×125 8×5½ OD	219.1×133 8.625×5.250	300 2.07	150 5.906
200×125 8×5½ OD	219.1×139.7 8.625×5.500	300 2.07	150 5.906
200×125 8×5	219.1×141.3 8.625×5.563	300 2.07	150 5.906
200×150 8×6	219.1×159 8.625×6.250	300 2.07	150 5.906

Nominal Size mm/in	Pipe O.D mm/in	Working Pressure PSI/MPa	Dimension L mm/in
200×150 8×6½ OD	219.1×165.1 8.625×6.500	300 2.07	150 5.906
200×150 8×6	219.1×168.3 8.625×6.625	300 2.07	150 5.906
250×25 10×1	273×33.7 10.750×1.315	300 2.07	166 6.535
250×32 10×1¼	273×42.4 10.750×1.660	300 2.07	166 6.535
250×40 10×1½	273×48.3 10.750×1.900	300 2.07	166 6.535
250×50 10×2	273×60.3 10.750×2.375	300 2.07	166 6.535
250×65 10×2½	273×73 10.750×2.875	300 2.07	166 6.535
250×65 10×3OD	273×76.1 10.750×3.000	300 2.07	166 6.535
250×80 10×3	273×88.9 10.750×3.500	300 2.07	166 6.535
250×100 10×4½ OD	273×108 10.750×4.250	300 2.07	166 6.535
250×100 10×4	273×114.3 10.750×4.500	300 2.07	166 6.535
250×125 10×5½ OD	273×133 10.750×5.250	300 2.07	166 6.535
250×125 10×5	273×139.7 10.750×5.500	300 2.07	166 6.535
250×125 10×5	273×141.3 10.750×5.563	300 2.07	166 6.535
250×150 10×6½ OD	273×159 10.750×6.250	300 2.07	166 6.535
250×150 10×6½ OD	273×165.1 10.750×6.500	300 2.07	166 6.535
250×150 10×6	273×168.3 10.750×6.625	300 2.07	166 6.535
250×200 10×8	273×219.1 10.750×8.625	300 2.07	166 6.535
300×25 12×1	323.9×33.7 12.750×1.315	300 2.07	220 8.661
300×32 12×1¼	323.9×42.4 12.750×1.660	300 2.07	220 8.661
300×40 12×1½	323.9×48.3 12.750×1.900	300 2.07	220 8.661
300×50 12×2	323.9×60.3 12.750×2.375	300 2.07	220 8.661
300×65 12×2½	323.9×73 12.750×2.875	300 2.07	220 8.661
300×65 12×3OD	323.9×76.1 12.750×3.000	300 2.07	220 8.661
300×80 12×3	323.9×88.9 12.750×3.500	300 2.07	220 8.661
300×100 12×4½ OD	323.9×108 12.750×4.250	300 2.07	220 8.661
300×100 12×4	323.9×114.3 12.750×4.500	300 2.07	220 8.661
300×125 12×5½ OD	323.9×133 12.750×5.250	300 2.07	220 8.661
300×125 12×5½ OD	323.9×139.7 12.750×5.500	300 2.07	220 8.661
300×125 12×5	323.9×141.3 12.750×5.563	300 2.07	220 8.661
300×150 12×6½ OD	323.9×159 12.750×6.250	300 2.07	220 8.661
300×150 12×6½ OD	323.9×165.1 12.750×6.500	300 2.07	220 8.661
300×150 12×6	323.9×168.3 12.750×6.625	300 2.07	220 8.661
300×200 12×8	323.9×219.1 12.750×8.625	300 2.07	220 8.661

XGQT13S
Threaded Reducing Tee

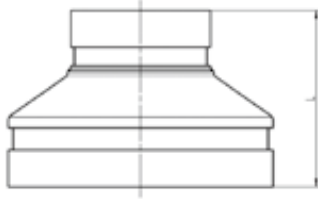


Nominal Size mm/in	Pipe O.D mm/in	Working Pressure PSI/MPa	Dimension n L mm/in
40 × 32 1½ × 1¼	48.3 × 42.4 1.900 × 1.660	300 2.07	60 2.362
50 × 25 2 × 1	60.3 × 33.7 2.375 × 1.315	300 2.07	70 2.756
50 × 32 2 × 1¼	60.3 × 42.4 2.375 × 1.660	300 2.07	70 2.756
50 × 40 2 × 1½	60.3 × 48.3 2.375 × 1.900	300 2.07	70 2.756
65 × 25 2½ × 1	73 × 33.7 2.875 × 1.315	300 2.07	76 2.992
65 × 32 2½ × 1¼	73 × 42.4 2.875 × 1.660	300 2.07	76 2.992
65 × 40 2½ × 1½	73 × 48.3 2.875 × 1.900	300 2.07	76 2.992
65 × 50 2½ × 2	73 × 60.3 2.875 × 2.375	300 2.07	76 2.992
65 × 25 3OD × 1	76.1 × 33.7 3.000 × 1.315	300 2.07	76 2.992
65 × 32 3OD × 1¼	76.1 × 42.4 3.000 × 1.660	300 2.07	76 2.992
65 × 40 3OD × 1½	76.1 × 48.3 3.000 × 1.900	300 2.07	76 2.992
65 × 50 3OD × 2	76.1 × 60.3 3.000 × 2.375	300 2.07	76 2.992
80 × 25 3 × 1	88.9 × 33.7 3.500 × 1.315	300 2.07	86 3.386
80 × 32 3 × 1¼	88.9 × 42.4 3.500 × 1.660	300 2.07	86 3.386
80 × 40 3 × 1½	88.9 × 48.3 3.500 × 1.900	300 2.07	86 3.386
80 × 50 3 × 2	88.9 × 60.3 3.500 × 2.375	300 2.07	86 3.386
80 × 65 3 × 2½	88.9 × 73 3.500 × 2.875	300 2.07	86 3.386
80 × 65 3 × 3OD	88.9 × 76.1 3.500 × 3.000	300 2.07	86 3.386
100 × 25 4½ OD × 1	108 × 33.7 4.250 × 1.315	300 2.07	102 4.016
100 × 32 4½ OD × 1¼	108 × 42.4 4.250 × 1.660	300 2.07	102 4.016
100 × 40 4½ OD × 1½	108 × 48.3 4.250 × 1.900	300 2.07	102 4.016
100 × 50 4½ OD × 2	108 × 60.3 4.250 × 2.375	300 2.07	102 4.016
100 × 65 4½ OD × 2½	108 × 73 4.250 × 2.875	300 2.07	102 4.016
100 × 65 4½ OD × 3OD	108 × 76.1 4.250 × 3.000	300 2.07	102 4.016
100 × 80 4 × 3	108 × 88.9 4.250 × 3.500	300 2.07	102 4.016
100 × 25 4 × 1	114.3 × 33.7 4.500 × 1.315	300 2.07	102 4.016
100 × 32 4 × 1¼	114.3 × 42.4 4.500 × 1.660	300 2.07	102 4.016
100 × 40 4 × 1½	114.3 × 48.3 4.500 × 1.900	300 2.07	102 4.016
100 × 50 4 × 2	114.3 × 60.3 4.500 × 2.375	300 2.07	102 4.016
100 × 65 4 × 2½	114.3 × 73 4.500 × 2.875	300 2.07	102 4.016
100 × 65 4 × 3OD	114.3 × 76.1 4.500 × 3.000	300 2.07	102 4.016
100 × 80 4 × 3	114.3 × 88.9 4.500 × 3.500	300 2.07	102 4.016
125 × 25 5½ OD × 1	139.7 × 33.7 5.500 × 1.315	300 2.07	108 4.252
125 × 32 5½ OD × 1¼	139.7 × 42.4 5.500 × 1.660	300 2.07	108 4.252

Nominal Size mm/in	Pipe O.D mm/in	Working Pressure PSI/MPa	Dimension n L mm/in
125 × 40 5½ OD × 1½	139.7 × 48.3 5.500 × 1.900	300 2.07	108 4.252
125 × 50 5½ OD × 2	139.7 × 60.3 5.500 × 2.375	300 2.07	108 4.252
125 × 65 5½ OD × 2½	139.7 × 73 5.500 × 2.875	300 2.07	108 4.252
125 × 65 5½ OD × 3OD	139.7 × 76.1 5.500 × 3.000	300 2.07	108 4.252
125 × 80 5½ OD × 3	139.7 × 88.9 5.500 × 3.500	300 2.07	108 4.252
125 × 100 5½ OD × 4	139.7 × 114.3 5.500 × 4.500	300 2.07	108 4.252
150 × 65 6 × 3OD	159 × 76.1 6.250 × 3.000	300 2.07	120 4.724
150 × 80 6½ OD × 3	159 × 88.9 6.250 × 3.500	300 2.07	120 4.724
150 × 100 6½ OD × 4	159 × 114.3 6.250 × 4.500	300 2.07	120 4.724
150 × 25 6½ OD × 1	165.1 × 33.7 6.500 × 1.315	300 2.07	110 4.331
150 × 32 6½ OD × 1¼	165.1 × 42.4 6.500 × 1.660	300 2.07	110 4.331
150 × 40 6½ OD × 1½	165.1 × 48.3 6.500 × 1.900	300 2.07	110 4.724
150 × 50 6½ OD × 2	165.1 × 60.3 6.500 × 2.375	300 2.07	110 4.331
150 × 65 6½ OD × 2½	165.1 × 73 6.500 × 2.875	300 2.07	120 4.724
150 × 65 6½ OD × 3OD	165.1 × 76.1 6.500 × 3.000	300 2.07	120 4.724
150 × 80 6½ OD × 3	165.1 × 88.9 6.500 × 3.500	300 2.07	120 4.724
150 × 100 6½ OD × 4	165.1 × 114.3 6.500 × 4.500	300 2.07	120 4.724
150 × 25 6 × 1	168.3 × 33.7 6.625 × 1.315	300 2.07	120 4.724
150 × 32 6 × 1¼	168.3 × 42.4 6.625 × 1.660	300 2.07	120 4.724
150 × 40 6 × 1½	168.3 × 48.3 6.625 × 1.900	300 2.07	120 4.724
150 × 50 6 × 2	168.3 × 60.3 6.625 × 2.375	300 2.07	120 4.724
150 × 65 6 × 2½	168.3 × 73 6.625 × 2.875	300 2.07	120 4.724
150 × 65 6 × 3OD	168.3 × 76.1 6.625 × 3.000	300 2.07	120 4.724
150 × 80 6 × 3	168.3 × 88.9 6.625 × 3.500	300 2.07	120 4.724
150 × 100 6 × 4	168.3 × 114.3 6.625 × 4.500	300 2.07	120 4.724
200 × 65 8 × 3OD	219.1 × 76.1 8.625 × 3.000	300 2.07	135 5.315
200 × 80 8 × 3	219.1 × 88.9 8.625 × 3.500	300 2.07	135 5.315

XGQT07

Grooved Concentric Reducer

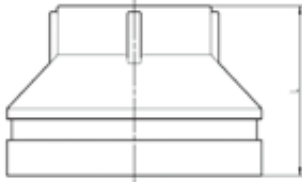


Nominal Size mm/in	Pipe O.D mm/in	Working Pressure PSI/MPa	Dimension ⁿ L mm/in
32×25	42.4×33.7	300	64
1 1/4×1	1.660×1.315	2.07	2.520
40×25	48.3×33.7	300	64
1 1/2×1	1.900×1.315	2.07	2.520
40×32	48.3×42.4	300	64
1 1/2×1 1/4	1.900×1.660	2.07	2.520
50×32	60.3×42.4	300	64
2×1 1/4	2.375×1.660	2.07	2.520
50×40	60.3×48.3	300	64
2×1 1/2	2.375×1.900	2.07	2.520
65×25	73×33.7	300	64
2 1/2×1	2.875×1.315	2.07	2.520
65×32	73×42.4	300	64
2 1/2×1 1/4	2.875×1.660	2.07	2.520
65×40	73×48.3	300	64
2 1/2×1 1/2	2.875×1.900	2.07	2.520
65×50	73×60.3	300	64
2 1/2×2	2.875×2.375	2.07	2.520
65×25	76.1×33.7	300	64
30D×1	3.000×1.315	2.07	2.520
65×32	76.1×42.4	300	64
30D×1 1/4	3.000×1.660	2.07	2.520
65×40	76.1×48.3	300	64
30D×1 1/2	3.000×1.900	2.07	2.520
65×50	76.1×60.3	300	64
30D×2	3.000×2.375	2.07	2.520
80×25	88.9×33.7	300	64
3×1	3.500×1.315	2.07	2.520
80×32	88.9×42.4	300	64
3×1 1/4	3.500×1.660	2.07	2.520
80×40	88.9×48.3	300	64
3×1 1/2	3.500×1.900	2.07	2.520
80×50	88.9×60.3	300	64
3×2	3.500×2.375	2.07	2.520
80×65	88.9×73	300	64
3×2 1/2	3.500×2.875	2.07	2.520
80×65	88.9×76.1	300	64
3×30D	3.500×3.000	2.07	2.520
100×25	108×33.7	300	76
4 1/4OD×1	4.250×1.315	2.07	2.992
100×32	108×42.4	300	76
4 1/4OD×1 1/4	4.250×1.660	2.07	2.992
100×40	108×48.3	300	76
4 1/4OD×1 1/2	4.250×1.900	2.07	2.992
100×50	108×60.3	300	76
4 1/4OD×2	4.250×2.375	2.07	2.992

Nominal Size mm/in	Pipe O.D mm/in	Working Pressure PSI/MPa	Dimension ⁿ L mm/in
100×65	108×73	300	76
4 1/4OD×2 1/2	4.250×2.875	2.07	2.992
100×65	108×76.1	300	76
4 1/4OD×30D	4.250×3.000	2.07	2.992
100×80	108×88.9	300	76
4 1/4OD×3	4.250×3.500	2.07	2.992
100×25	114.3×33.7	300	78
4×1	4.500×1.315	2.07	3.071
100×32	114.3×42.4	300	78
4×1 1/4	4.500×1.660	2.07	3.071
100×40	114.3×48.3	300	78
4×1 1/2	4.500×1.900	2.07	3.071
100×50	114.3×60.3	300	78
4×2	4.500×2.375	2.07	3.071
100×65	114.3×70.3	300	78
4×2 1/2	4.500×2.875	2.07	3.071
100×65	114.3×76.1	300	78
4×30D	4.500×3.000	2.07	3.071
100×80	114.3×88.9	300	78
4×3	4.500×3.500	2.07	3.071
125×25	139.7×33.7	300	89
5 1/2OD×1	5.500×1.315	2.07	3.504
125×32	139.7×42.4	300	89
5 1/2OD×1 1/4	5.500×1.660	2.07	3.504
125×40	139.7×48.3	300	89
5 1/2OD×1 1/2	5.500×1.900	2.07	3.504
125×50	139.7×60.3	300	89
5 1/2OD×2	5.500×2.375	2.07	3.504
125×65	139.7×73	300	89
5 1/2OD×2 1/2	5.500×2.875	2.07	3.504
125×65	139.7×76.1	300	89
5 1/2OD×30D	5.500×3.000	2.07	3.504
125×80	139.7×88.9	300	89
5 1/2OD×3	5.500×3.500	2.07	3.504
125×100	139.7×108	300	89
5 1/2OD×4 1/4OD	5.500×4.250	2.07	3.504
125×100	139.7×114.3	300	89
5 1/2OD×4	5.500×4.500	2.07	3.504
125×25	141.3×33.7	300	89
5×1	5.563×1.315	2.07	3.504
125×32	141.3×42.4	300	89
5×1 1/4	5.563×1.660	2.07	3.504
125×40	141.3×48.3	300	89
5×1 1/2	5.563×1.900	2.07	3.504
125×50	141.3×60.3	300	89
5×2	5.563×2.375	2.07	3.504
125×65	141.3×73	300	89
5×2 1/2	5.563×2.875	2.07	3.504
125×65	141.3×76.1	300	89
5×30D	5.563×3.000	2.07	3.504
125×80	141.3×88.9	300	89
5×3	5.563×3.500	2.07	3.504
125×100	141.3×108	300	89
5×4 1/4OD	5.563×4.250	2.07	3.504
125×100	141.3×114.3	300	89
5×4	5.563×4.500	2.07	3.504
150×25	159×33.7	300	102
6 1/2OD×1	6.250×1.315	2.07	4.016
150×32	159×42.4	300	102
6 1/2OD×1 1/4	6.250×1.660	2.07	4.016
150×40	159×48.3	300	102
6 1/2OD×1 1/2	6.250×1.900	2.07	4.016
150×50	159×60.3	300	102
6 1/2OD×2	6.250×2.375	2.07	4.016
150×65	159×73	300	102
6 1/2OD×2 1/2	6.250×2.875	2.07	4.016
150×65	159×76.1	300	102
6 1/2OD×3	6.250×3.000	2.07	4.016
150×80	159×88.9	300	102
6 1/2OD×30D	6.250×3.500	2.07	4.016
150×100	159×108	300	102
6 1/2OD×4 1/4OD	6.250×4.250	2.07	4.016
150×100	159×114.3	300	102
6 1/2OD×4	6.250×4.500	2.07	4.016
150×125	159×133	300	102
6 1/2OD×5 1/4OD	6.250×5.250	2.07	4.016
150×25	165.1×33.7	300	102
6 1/2OD×1	6.500×1.315	2.07	4.016

Nominal Size mm/in	Pipe O.D mm/in	Working Pressure PSI/MPa	Dimension ⁿ L mm/in
150×32	165.1×42.4	300	102
6 1/2OD×1 1/4	6.500×1.660	2.07	4.016
150×40	165.1×48.3	300	102
6 1/2OD×1 1/2	6.500×1.900	2.07	4.016
150×50	165.1×60.3	300	102
6 1/2OD×2	6.500×2.375	2.07	4.016
150×65	165.1×73	300	102
6 1/2OD×2 1/2	6.500×2.875	2.07	4.016
150×65	165.1×76.1	300	102
6 1/2OD×30D	6.500×3.000	2.07	4.016
150×80	165.1×88.9	300	102
6 1/2OD×3	6.500×3.500	2.07	4.016
150×100	165.1×108	300	102
6 1/2OD×4 1/4OD	6.500×4.250	2.07	4.016
150×100	165.1×114.3	300	102
6 1/2OD×4	6.500×4.500	2.07	4.016
150×125	165.1×133	300	102
6 1/2OD×5 1/4OD	6.500×5.250	2.07	4.016
150×125	165.1×139.7	300	102
6 1/2OD×5 1/4OD	6.500×5.500	2.07	4.016
150×125	165.1×141.3	300	102
6 1/2OD×5	6.500×5.563	2.07	4.016
150×25	168.3×33.7	300	102
6×1	6.625×1.315	2.07	4.016
150×32	168.3×42.4	300	102
6×1 1/4	6.625×1.660	2.07	4.016
150×40	168.3×48.3	300	102
6×1 1/2	6.625×1.900	2.07	4.016
150×50	168.3×60.3	300	102
6×2	6.625×2.375	2.07	4.016
150×65	168.3×73	300	102
6×2 1/2	6.625×2.875	2.07	4.016
150×65	168.3×76.1	300	102
6×30D	6.625×3.000	2.07	4.016
150×80	168.3×88.9	300	104
6×3	6.625×3.500	2.07	4.094
150×100	168.3×108	300	104
6×4 1/4OD	6.625×4.25	2.07	4.094
150×100	168.3×114.3	300	104
6×4	6.625×4.500	2.07	4.094
150×125	168.3×133	300	104
6×5 1/2OD	6.625×5.250	2.07	4.094
150×125	168.3×139.7	300	104
6×5 1/2OD	6.625×5.500	2.07	4.094
150×125	168.3×141.3	300	104
6×5	6.625×5.563	2.07	4.094
200×65	219.1×73	300	127
8×2 1/2	8.625×2.875	2.07	5.000
200×65	219.1×76.1	300	127
8×30D	8.625×3.000	2.07	5.000
200×80	219.1×88.9	300	127
8×3	8.625×3.500	2.07	5.000
200×100	219.1×108	300	127
8×4 1/4OD	8.625×4.250	2.07	5.000
200×100	219.1×114.3	300	127
8×4	8.625×4.500	2.07	5.000
200×125	219.1×133	300	127
8×5 1/2OD	8.625×5.250	2.07	5.000
200×125	219.1×139.7	300	127
8×5 1/2OD	8.625×5.500	2.07	5.000
200×125	219.1×141.3	300	127
8×5	8.625×5.563	2.07	5.000
200×150	219.1×159	300	127
8×6 1/4OD	8.625×6.250	2.07	5.000
200×150	219.1×165.1	300	127
8×6 1/4OD	8.625×6.500	2.07	5.000
200×150	219.1×168.3	300	127
8×6	8.625×6.625	2.07	5.000
250×125	273×141.3	300	125
10×5	10.75×5.563	2.07	4.920
250×150	273×168.3	300	152
10×6	10.75×6.625	2.07	5.980
250×200	273×219	300	152
10×8	10.75×8.625	2.07	5.980
300×200	323.9×219.1	300	109
12×8	12.750×8.625	2.07	4.291
300×250	323.9×273	300	109
12×10	12.750×10.750	2.07	4.291

XGQT07S
Threaded
Concentric Reducer

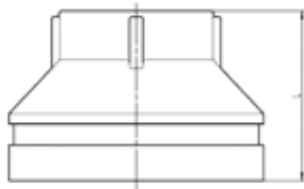


Nominal Size mm/in	Pipe O.D mm/in	Working Pressure PSI/MPa	Dimension n L mm/in
32 × 25 1 1/4 × 1	42.4 × 33.7 1.660 × 1.315	300 2.07	64 2.520
40 × 25 1 1/2 × 1	48.3 × 33.7 1.900 × 1.315	300 2.07	64 2.520
40 × 32 1 1/2 × 1 1/4	48.3 × 42.4 1.900 × 1.660	300 2.07	64 2.520
50 × 15 2 × 1/2	60.3 × 21.3 2.375 × 0.825	300 2.07	64 2.520
50 × 20 2 × 3/4	60.3 × 26.9 2.375 × 1.050	300 2.07	64 2.520
50 × 25 2 × 1	60.3 × 33.7 2.375 × 1.315	300 2.07	64 2.520
50 × 32 2 × 1 1/4	60.3 × 42.4 2.375 × 1.660	300 2.07	64 2.520
50 × 40 2 × 1 1/2	60.3 × 48.3 2.375 × 1.900	300 2.07	64 2.520
65 × 15 2 1/2 × 1/2	73.0 × 21.3 2.875 × 0.825	300 2.07	64 2.520
65 × 20 2 1/2 × 3/4	73.0 × 26.9 2.875 × 1.050	300 2.07	64 2.520
65 × 25 2 1/2 × 1	73.0 × 33.7 2.875 × 1.315	300 2.07	64 2.520
65 × 32 2 1/2 × 1 1/4	73.0 × 42.4 2.875 × 1.660	300 2.07	64 2.520
65 × 40 2 1/2 × 1 1/2	73.0 × 48.3 2.875 × 1.900	300 2.07	64 2.520
65 × 50 2 1/2 × 2	73.0 × 60.3 2.875 × 2.375	300 2.07	64 2.520
65 × 15 3OD × 1/2	76.1 × 21.3 3.000 × 0.825	300 2.07	64 2.520
65 × 20 3OD × 3/4	76.1 × 26.9 3.000 × 1.050	300 2.07	64 2.520
65 × 25 3OD × 1	76.1 × 33.7 3.000 × 1.315	300 2.07	64 2.520
65 × 32 3OD × 1 1/4	76.1 × 42.4 3.000 × 1.660	300 2.07	64 2.520
65 × 40 3OD × 1 1/2	76.1 × 48.3 3.000 × 1.900	300 2.07	64 2.520
65 × 50 3OD × 2	76.1 × 60.3 3.000 × 2.375	300 2.07	64 2.520
80 × 15 3 × 1/2	88.9 × 21.3 3.500 × 0.825	300 2.07	64 2.520
80 × 20 3 × 3/4	88.9 × 26.9 3.500 × 1.050	300 2.07	64 2.520
80 × 25 3 × 1	88.9 × 33.7 3.500 × 1.315	300 2.07	64 2.520
80 × 32 3 × 1 1/4	88.9 × 42.7 3.500 × 1.660	300 2.07	64 2.520
80 × 40 3 × 1 1/2	88.9 × 48.3 3.500 × 1.900	300 2.07	64 2.520
80 × 50 3 × 2	88.9 × 60.3 3.500 × 2.375	300 2.07	64 2.520
80 × 65 3 × 2 1/2	88.9 × 73.0 3.500 × 2.875	300 2.07	64 2.520
80 × 65 3 × 3OD	88.9 × 76.1 3.500 × 3.000	300 2.07	64 2.520
100 × 25 4 1/4OD × 1	108.0 × 33.7 4.250 × 1.315	300 2.07	76 2.992
100 × 32 4 1/4OD × 1 1/4	108.0 × 42.4 4.250 × 1.660	300 2.07	76 2.992
100 × 40 4 1/4OD × 1 1/2	108.0 × 48.3 4.250 × 1.900	300 2.07	76 2.992
100 × 50 4 1/4OD × 2	108.0 × 60.3 4.250 × 2.375	300 2.07	76 2.992
100 × 65 4 1/4OD × 2 1/2	108.0 × 73.0 4.250 × 2.875	300 2.07	76 2.992
100 × 65 4 1/4OD × 3OD	108.0 × 76.1 4.250 × 3.000	300 2.07	76 2.992

Nominal Size mm/in	Pipe O.D mm/in	Working Pressure PSI/MPa	Dimension n L mm/in
100 × 80 4 1/4OD × 3	108.0 × 88.9 4.250 × 3.500	300 2.07	76 2.992
100 × 15 4 × 1/2	114.3 × 21.3 4.500 × 0.825	300 2.07	77 3.031
100 × 20 4 × 3/4	114.3 × 26.9 4.500 × 1.050	300 2.07	77 3.031
100 × 25 4 × 1	114.3 × 33.7 4.500 × 1.315	300 2.07	77 3.031
100 × 32 4 × 1 1/4	114.3 × 42.4 4.500 × 1.660	300 2.07	77 3.031
100 × 40 4 × 1 1/2	114.3 × 48.3 4.500 × 1.900	300 2.07	77 3.031
100 × 50 4 × 2	114.3 × 60.3 4.500 × 2.315	300 2.07	77 3.031
100 × 65 4 × 2 1/2	114.3 × 73.0 4.500 × 2.875	300 2.07	77 3.031
100 × 65 4 × 3OD	114.3 × 76.1 4.500 × 3.000	300 2.07	77 3.031
100 × 80 4 × 3	114.3 × 88.9 4.500 × 3.500	300 2.07	77 3.031
125 × 15 5 1/4OD × 1/2	133.0 × 21.3 5.250 × 0.825	300 2.07	89 3.504
125 × 20 5 1/4OD × 3/4	133.0 × 26.9 5.250 × 1.050	300 2.07	89 3.504
125 × 25 5 1/4OD × 1	133.0 × 33.7 5.250 × 1.315	300 2.07	89 3.504
125 × 32 5 1/4OD × 1 1/4	133.0 × 42.4 5.250 × 1.660	300 2.07	89 3.504
125 × 40 5 1/4OD × 1 1/2	133.0 × 48.3 5.250 × 1.900	300 2.07	89 3.504
125 × 50 5 1/4OD × 2	133.0 × 60.3 5.250 × 2.315	300 2.07	89 3.504
125 × 65 5 1/4OD × 2 1/2	133.0 × 73.0 5.250 × 2.875	300 2.07	89 3.504
125 × 65 5 1/4OD × 3OD	133.0 × 76.1 5.250 × 3.000	300 2.07	89 3.504
125 × 80 5 1/2OD × 3	139.7 × 88.9 5.500 × 3.500	300 2.07	89 3.504
125 × 100 5 1/2OD × 4	139.7 × 114.3 5.500 × 4.500	300 2.07	89 3.504
125 × 15 5 1/2OD × 1/2	139.7 × 21.3 5.500 × 0.825	300 2.07	89 3.504
125 × 20 5 1/2OD × 3/4	139.7 × 26.9 5.500 × 1.050	300 2.07	89 3.504
125 × 25 5 1/2OD × 1	139.7 × 33.7 5.500 × 1.315	300 2.07	89 3.504
125 × 32 5 1/2OD × 1 1/4	139.7 × 42.4 5.500 × 1.660	300 2.07	89 3.504
125 × 40 5 1/2OD × 1 1/2	139.7 × 48.3 5.500 × 1.900	300 2.07	89 3.504
125 × 50 5 1/2OD × 2	139.7 × 60.3 5.500 × 2.315	300 2.07	89 3.504
125 × 65 5 1/2OD × 2 1/2	139.7 × 73.0 5.500 × 2.875	300 2.07	89 3.504
125 × 65 5 1/2OD × 3OD	139.7 × 76.1 5.500 × 3.000	300 2.07	89 3.504
125 × 80 5 1/2OD × 3	139.7 × 88.9 5.500 × 3.500	300 2.07	89 3.504
125 × 100 5 1/2OD × 4	139.7 × 114.3 5.500 × 4.500	300 2.07	89 3.504
150 × 15 6 1/4OD × 1/2	159.0 × 21.3 6.250 × 0.825	300 2.07	102 4.016
150 × 20 6 1/4OD × 3/4	159.0 × 26.9 6.250 × 1.050	300 2.07	102 4.016
150 × 25 6 1/4OD × 1	159.0 × 33.7 6.250 × 1.315	300 2.07	102 4.016
150 × 32 6 1/4OD × 1 1/4	159.0 × 42.4 6.250 × 1.660	300 2.07	102 4.016

XGQT07S

Threaded
Concentric Reducer

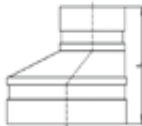


Nominal Size mm/in	Pipe O.D mm/in	Working Pressure PSI/MPa	Dimension n L mm/in
150×40	159.0×48.3	300	102
6 1/2 OD×1 1/2	6.250×1.900	2.07	4.016
150×50	159.0×60.3	300	102
6 1/2 OD×2	6.250×2.315	2.07	4.016
150×65	159.0×73.0	300	102
6 1/2 OD×2 1/2	6.250×2.875	2.07	4.016
150×65	159.0×76.1	300	102
6 1/2 OD×3OD	6.250×3.000	2.07	4.016
150×80	159.0×88.9	300	102
6 1/2 OD×3	6.250×3.500	2.07	4.016
150×100	159.0×114.3	300	102
6 1/2 OD×4	6.250×4.500	2.07	4.016
150×15	165.1×21.3	300	102
6 1/2 OD×1/2	6.500×0.825	2.07	4.016
150×20	165.1×26.9	300	102
6 1/2 OD×3/4	6.500×1.050	2.07	4.016
150×25	165.1×33.7	300	102
6 1/2 OD×1	6.500×1.315	2.07	4.016
150×32	165.1×42.4	300	102
6 1/2 OD×1 1/4	6.500×1.660	2.07	4.016
150×40	165.1×48.3	300	102
6 1/2 OD×1 1/2	6.500×1.900	2.07	4.016
150×50	165.1×60.3	300	102
6 1/2 OD×2	6.500×2.315	2.07	4.016
150×65	165.1×73.0	300	102
6 1/2 OD×2 1/2	6.500×2.875	2.07	4.016
150×65	165.1×76.1	300	102
6 1/2 OD×3OD	6.500×3.000	2.07	4.016
150×80	165.1×88.9	300	102
6 1/2 OD×3	6.500×3.500	2.07	4.016
150×100	165.1×114.3	300	102
6 1/2 OD×4	6.500×4.500	2.07	4.016
150×15	168.3×21.3	300	102
6×1/2	6.625×0.825	2.07	4.016

Nominal Size mm/in	Pipe O.D mm/in	Working Pressure PSI/MPa	Dimension n L mm/in
150×20	168.3×26.9	300	102
6×3/4	6.625×1.050	2.07	4.016
150×25	168.3×33.7	300	102
6×1	6.625×1.315	2.07	4.016
150×32	168.3×42.4	300	102
6×1 1/4	6.625×1.660	2.07	4.016
150×40	168.3×48.3	300	102
6×1 1/2	6.625×1.900	2.07	4.016
150×50	168.3×60.3	300	102
6×2	6.625×2.315	2.07	4.016
150×65	168.3×73.0	300	102
6×2 1/2	6.625×2.875	2.07	4.016
150×65	168.3×76.1	300	102
6×3OD	6.625×3.000	2.07	4.016
150×80	168.3×88.9	300	102
6×3	6.625×3.500	2.07	4.016
150×100	168.3×114.3	300	102
6×4	6.625×4.500	2.07	4.016
200×25	219.1×33.7	300	127
8×1	8.625×1.315	2.07	5.000
200×32	219.1×42.4	300	127
8×1 1/4	8.625×1.660	2.07	5.000
200×40	219.1×48.3	300	127
8×1 1/2	8.625×1.900	2.07	5.000
200×50	219.1×60.3	300	127
8×2	8.625×2.315	2.07	5.000
200×65	219.1×73.0	300	127
8×2 1/2	8.625×2.875	2.07	5.000
200×65	219.1×76.1	300	127
8×3OD	8.625×3.000	2.07	5.000
200×80	219.1×88.9	300	127
8×3	8.625×3.500	2.07	5.000
200×100	219.1×114.3	300	127
8×4	8.625×4.500	2.07	5.000

XGQT17

Grooved
Eccentric Reducer



Nominal Size mm/in	Pipe O.D mm/in	Working Pressure PSI/MPa	Dimension n L mm/in
65×50	73×60.3	300	64
2 1/2×2	2.875×2.375	2.07	2.520
80×50	88.9×60.3	300	64
3×2	3.500×2.375	2.07	2.520
80×65	88.9×73	300	64
3×2 1/2	3.500×2.875	2.07	2.520
80×65	88.9×76.1	300	64
3×3OD	3.500×3.000	2.07	2.520
100×40	114.3×48.3	300	76
4×1 1/2	4.500×1.900	2.07	2.992
100×50	114.3×60.3	300	76
4×2	4.500×2.375	2.07	2.992
100×65	114.3×73	300	76
4×2 1/2	4.500×2.875	2.07	2.992
100×65	114.3×76.1	300	76
4×3OD	4.500×3.000	2.07	2.992
100×80	114.3×88.9	300	76
4×3	4.500×3.500	2.07	2.992

Nominal Size mm/in	Pipe O.D mm/in	Working Pressure PSI/MPa	Dimension n L mm/in
150×80	165.1×88.9	300	102
6 1/2 OD×3	6.500×3.500	2.07	4.016
150×100	165.1×114.3	300	102
6 1/2 OD×4	6.500×4.500	2.07	4.016
150×65	168.3×76.1	300	102
6×3OD	6.625×3.000	2.07	4.016
150×80	168.3×88.9	300	102
6×3	6.625×3.500	2.07	4.016
150×100	168.3×114.3	300	102
6×4	6.625×4.500	2.07	4.016
200×100	219.1×114.3	300	127
8×4	8.625×4.500	2.07	5.000
200×150	219.1×165.1	300	127
8×6 1/2 OD	8.625×6.500	2.07	5.000
200×150	219.1×168.3	300	127
8×6	8.625×6.625	2.07	5.000

XGQT07WS

Reducer Grooved×Male
Threaded



Nominal Size mm/in	Pipe O.D mm/in	Working Pressure PSI/MPa	Dimension n L mm/in
32×32	42.4×42.4	300	62
1 1/4×1 1/4	1.669×1.669	2.07	2.441
40×40	48.3×48.3	300	62
1 1/2×1 1/2	1.900×1.900	2.07	2.441
50×50	60.3×60.3	300	62
2×2	2.375×2.375	2.07	2.441
65×65	73×76.1	300	64
2 1/2×3OD	2.875×3.000	2.07	2.520
65×65	76.1×76.1	300	62
3OD×3OD	3.000×3.000	2.07	2.441
80×80	88.9×88.9	300	62
3×3	3.500×3.500	2.07	2.441

Installation Instruction For Rigid & Flexible Coupling



1. Pipe preparation

Check pipe end for proper groove dimensions and to assure that pipe end is free of indentations and projections that would prevent proper sealing.



2. Lubricate gasket

Check gasket to be sure it's compatible for the intended service. Apply thin lubricant to the outside and sealing lips of the gasket.



3. Gasket installation

Slip the gasket over one pipe, making sure the gasket lip does not over-hang the pipe end.



4. Alignment

After aligning two pipe ends together, pull the gasket into position, centering between the grooves on each pipe. The gasket should not extend into the groove on either pipe.



5. Housing installation

Remove one bolt & nut and loosen the other nut. Place one housing over the gasket, making sure the housing keys fit into the pipe grooves. Swing the other housing over the gasket and into the grooves on both pipes. Re-insert the bolt and connect two housings.



6. Tighten nuts

Firstly hand tighten nuts and make sure oval neck bolt completely fits into bolt hole. Then securely tighten nuts alternatively and equally to the specified bolt torque by using spanner.



7 a. Assembly completed- Rigid Coupling

For Rigid Coupling, keep the gaps at bolt pads evenly spaced. Gaskets can't be seen visually.



7 b. Assembly completed- Flexible Coupling

For Flexible Coupling, two housings should be iron to iron connected. Gaskets can't be seen visually.

Caution

Proper torquing of bolts is required to obtain specified performance.

- Over torquing the bolts may result in damage to the bolt and / or casting which could result in pipe joint separation.
- Under torquing the bolts may result in lower pressure retention capabilities, lower bend load capabilities, joint leakage and pipe joint separation. Pipe joint separation may result in significant property damage and serious injury.

Specified Bolt Torque

ANSI BOLTS		
Bolt Size	Specified Bolt Torque	
	Lbs-Ft.	N.m
3/8	30-45	40-60
1/2	80-100	110-135
5/8	100-130	135-175
3/4	130-180	175-245
7/8	180-240	245-325

Installation Instruction For Threaded & Grooved Mechanical Tee



1. Pipe preparation

Clean the gasket sealing surface within 16mm of the hole and visually inspect the sealing surface for defects that may prevent proper sealing of the gasket. Don't drill the hole on weld line.



2. Remove burrs

If any burrs or slug exists at the pipe hole, please remove them before assembly, to protect the gasket and avoid leakage.



3. Gasket installation

Insert the gasket into outlet housing making sure the tab in the gasket line up with the tab recesses in the housing. Align outlet housing over the pipe hole making sure that the locating collar is in the pipe hole.



4. Alignment

Align the strap around the pipe, insert the bolts and tighten the nuts finger tight.



5. Tighten nuts

Alternatively and evenly tighten the nuts to the specified bolt torque.



6. Assembly completed

There should be even gaps on two sides between upper and lower housings.

Caution

Proper torquing of bolts is required to obtain specified performance.

- Over torquing the bolts may result in damage to the bolt and / or casting which could result in pipe joint separation.
- Under torquing the bolts may result in lower pressure retention capabilities, lower bend load capabilities, joint leakage and pipe joint separation. Pipe joint separation may result in significant property damage and serious injury.

Specified Bolt Torque

ANSI BOLTS		
Bolt Size	Specified Bolt Torque	
	Inch	Lbs-Ft.
3/8	30-45	40-60
1/2	80-100	110-135
5/8	100-130	135-175
3/4	—	—
7/8	—	—

Installation Instruction For Grooved Flange



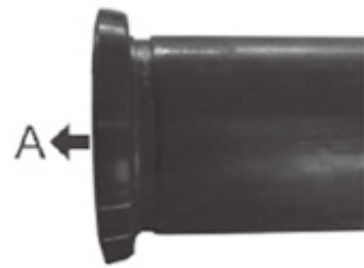
1. Pipe preparation

Check pipe end for proper groove dimensions and to assure that pipe end is free of indentations and projections that would prevent proper sealing.



2. Lubricate gasket

Check gasket to be sure it's compatible for the intended service. Apply thin lubricant to the outside and sealing lips of the gasket.



3. Gasket installation

Slip the gasket over pipe end, with the gasket opening side towards "A". Make sure the gasket sealing lip is even with pipe end.



4. Housing installation

Remove bolts and nuts, place two housings over the gasket, making sure the housing keys fit into the pipe grooves. Re-insert the bolts and hand tighten the nuts.



5. Tighten nuts

Securely tighten nuts alternatively and equally to the specified bolt torque by using spanner.



6. Connect mating flange

Align flange bolt holes with mating flange (or valve) bolt holes. Insert a standard flange bolt through bolt hole and hand tighten a nut. Insert another bolt opposite the first and hand tighten a nut. Continue this until all bolt holes are fitted. Tighten nuts evenly to specified bolt torque, so flange faces remain parallel. Assembly completed.

Caution

Proper torquing of bolts is required to obtain specified performance.

- Over torquing the bolts may result in damage to the bolt and / or casting which could result in pipe joint separation.
- Under torquing the bolts may result in lower pressure retention capabilities, lower bend load capabilities, joint leakage and pipe joint separation. Pipe joint separation may result in significant property damage and serious injury.

Specified Bolt Torque

ANSI BOLTS		
Bolt Size	Specified Bolt Torque	
	Lbs-Ft.	N.m
Inch		
M10	30-45	40-60
M12	80-100	110-135
M16	—	—
M20	—	—
M22	—	—
M24	—	—

GASKET DATA



Gasket	Name	Temperature Range	General Service Recommendations	Color Mark
E	EPDM	-34~+110°C (-30~+230°F)	Recommended for hot water service within the specified temperature range plus a variety of dilute acids, oil-free air and many chemical services. UL classified in accordance with ANSI/NSF 61 or cold +86°F(+30°C) and hot +180°F (+82°C) potable water service. Not recommended for petroleum service.	Green Strip
D	NBR	-29~+82°C (-20~+180°F)	Recommended for petroleum products, air with oil vapors, vegetable and mineral oils within the specified temperature range. Not recommended for hot water services.	Orange Strip
S	Silicon Rubber	-40~+177°C (-40~+350°F)	Recommended for high temperature dry air and some high temperature chemical products.	White

Bolts and Nuts

Raw material of oval neck track bolts and hex nuts are taken as 35# steel, and its mechanical properties reach ISO 898-1 Gr.8.8. The bolts and nuts are electro zinc plated in a silver chromate color. The oval neck track bolts mate into the oval holes in the housing segments to allow for easy tightening using only a single wrench/spanner, safely and firmly.

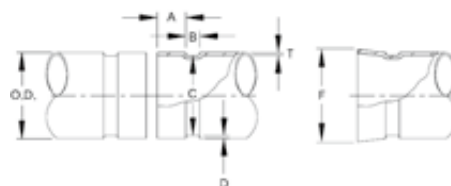


Bolt dimension	M10	M12	M16	M20	M22
Spanner dimension	15	18	24	30	34

Roll Groove Dimensions



Roll Grooving Machine



Nominal Size mm/in	Pipe OD		Gasket seat A $\pm 0.76 \pm 0.03$ mm/in	Groove Width B $\pm 0.76 \pm 0.03$ mm/in	Groove Dia C		Groove Depth D (ref) mm/in	Max Allow Flare Dia F mm/in	Min. Allow wall thickness T mm/in	
	Basic mm/in	Tolerance mm/in			Basic mm/in	Tolerance mm/in				
25 1	33.7 1.327	+0.41 +0.016	-0.68 -0.026	15.88 0.625	7.14 0.281	30.23 1.190	-0.38 -0.015	1.50 0.063	34.5 1.358	1.8 0.071
32 1 1/4	42.4 1.669	+0.50 +0.020	-0.60 -0.023	15.88 0.625	7.14 0.281	38.99 1.535	-0.38 -0.015	1.80 0.063	43.3 1.705	1.8 0.071
40 1 1/2	48.3 1.900	+0.44 +0.017	-0.52 -0.020	15.88 0.625	7.14 0.281	45.09 1.779	-0.38 -0.015	1.80 0.063	48.4 1.945	1.8 0.071
50 2	60.3 2.375	+0.51 +0.024	-0.51 -0.024	15.88 0.625	8.74 0.344	57.15 2.250	-0.38 -0.015	1.80 0.063	62.2 2.449	1.8 0.071
65 2 1/2	73.0 2.875	+0.74 +0.029	-0.74 -0.029	15.88 0.625	8.74 0.344	69.09 2.720	-0.45 -0.018	1.98 0.078	75.2 2.961	2.3 0.091
85 2 3/4	76.1 3.000	+0.76 +0.030	-0.76 -0.030	15.88 0.625	8.74 0.344	72.26 2.845	-0.45 -0.018	1.98 0.078	77.7 3.059	2.3 0.091
80 3	88.9 3.500	+0.89 +0.035	-0.79 -0.031	15.88 0.625	8.74 0.344	84.94 3.344	-0.45 -0.018	1.98 0.078	90.6 3.567	2.3 0.091
100 4	108.0 4.250	+1.07 +0.042	-0.79 -0.031	15.88 0.625	8.74 0.344	103.73 4.084	-0.51 -0.020	2.11 0.083	109.7 4.319	2.3 0.091
100 4	114.3 4.500	+1.14 +0.045	-0.79 -0.031	15.88 0.625	8.74 0.344	110.08 4.334	-0.51 -0.020	2.11 0.083	116.2 4.575	2.3 0.091
125 5	133.0 5.250	+1.32 +0.052	-0.79 -0.031	15.88 0.625	8.74 0.344	129.13 5.084	-0.51 -0.020	2.11 0.083	134.9 5.311	2.9 0.114
125 5	139.7 5.500	+1.40 +0.055	-0.79 -0.031	15.88 0.625	8.74 0.344	135.48 5.334	-0.51 -0.020	2.11 0.083	141.7 5.579	2.9 0.114
125 5	141.3 5.563	+1.42 +0.056	-0.79 -0.031	15.88 0.625	8.74 0.344	137.03 5.395	-0.56 -0.022	2.13 0.084	143.5 5.650	2.9 0.114
150 6	159.0 6.250	+1.90 +0.063	-0.79 -0.031	15.88 0.625	8.74 0.344	154.50 6.083	-0.56 -0.022	2.16 0.085	161.0 6.339	2.9 0.114
150 6	165.1 6.500	+1.80 +0.063	-0.79 -0.031	15.88 0.625	8.74 0.344	160.8 6.330	-0.56 -0.022	2.16 0.085	167.1 6.579	2.9 0.114
150 6	168.3 6.625	+1.80 +0.063	-0.79 -0.031	15.88 0.625	8.74 0.344	163.96 6.455	-0.56 -0.022	2.16 0.085	170.7 6.720	2.9 0.114
200A 8	216.3 8.516	+1.80 +0.063	-0.79 -0.031	19.05 0.750	11.91 0.469	211.60 8.331	-0.64 -0.025	2.35 0.093	219.8 8.653	2.9 0.114
200 8	219.1 8.625	+1.80 +0.063	-0.79 -0.031	19.05 0.750	11.91 0.469	214.40 8.441	-0.64 -0.025	2.34 0.092	221.5 8.720	2.9 0.114
250A 10	257.4 10.528	+1.80 +0.063	-0.79 -0.031	19.05 0.750	11.91 0.469	252.60 10.339	-0.69 -0.027	2.40 0.095	270.9 10.665	3.6 0.142
250 10	273.0 10.750	+1.80 +0.063	-0.79 -0.031	19.05 0.750	11.91 0.469	268.28 10.562	-0.69 -0.027	2.38 0.094	275.4 10.842	3.6 0.142
300A 12	318.5 12.539	+1.80 +0.063	-0.79 -0.031	19.05 0.750	11.91 0.469	312.90 12.319	-0.75 -0.030	2.77 0.109	322.0 12.677	4.0 0.158
300 12	323.9 12.750	+1.80 +0.063	-0.79 -0.031	19.05 0.750	11.91 0.469	318.29 12.531	-0.75 -0.030	2.77 0.109	326.2 12.842	4.0 0.158
350 14	377.0 14.842	+1.80 +0.063	-0.79 -0.031	23.83 0.938	11.91 0.469	371.44 14.623	-0.75 -0.030	2.77 0.109	379.5 14.941	4.5 0.177
400 16	426.0 16.772	+1.80 +0.063	-0.79 -0.031	23.83 0.938	11.91 0.469	420.45 16.553	-0.75 -0.030	2.77 0.109	426.5 16.870	4.5 0.177
500 20	529.0 20.827	+1.80 +0.063	-0.79 -0.031	25.40 1.000	11.91 0.469	523.45 20.608	-0.75 -0.030	2.77 0.109	533.0 20.984	5.0 0.197