

HWG Series

Submersible Pumps | Grinder Submersibles



Application

- Heavy duty grinder pump for pumping sewage
- Ideal for pumping sewage and wastewater in domestic, commercial and industrial applications

Features

- Semi-open impeller design with hardened stainless steel grinding system
- The large-diameter impeller generates a high pressure, and the grinding system grinds solids into small pieces, which can be drained without clogging the pipes
- Heavy duty HT200 cast iron construction
- Stainless steel shaft
- Guide rail kits available for all models
- Thermal overload protection

Working Conditions

- Liquid Temperature: 0 - 40°C (32 - 104°F)
- Max Immersion Depth: 5m

Technical Data

Model	Power kW (HP)	Discharge mm (inch)	Phase	Rated Flow (m ³ /h)	Rated Head	Solid Passage (mm)
HWG32-11-1	1.1 (1.5)	32 (1¼")	1	3.6	17	-
HWG32-11-1A	1.1 (1.5)	32 (1¼")	1	3.6	17	-
HWG32-11-3	1.1 (1.5)	32 (1¼")	3	3.6	17	-
HWG32-15-1	1.5 (2)	32 (1¼")	1	3.6	23	-
HWG32-15-3	1.5 (2)	32 (1¼")	3	3.6	23	-
HWG32-22-1	2.2 (3)	32 (1¼")	1	3.6	30	-
HWG32-22-3	2.2 (3)	32 (1¼")	3	3.6	30	-
HWG50-22-3	2.2 (3)	50 (2")	3	12	19	-
HWG50-30-3	3 (4)	50 (2")	3	12	22	-
HWG50-40-3	4 (5.5)	50 (2")	3	12	30	-

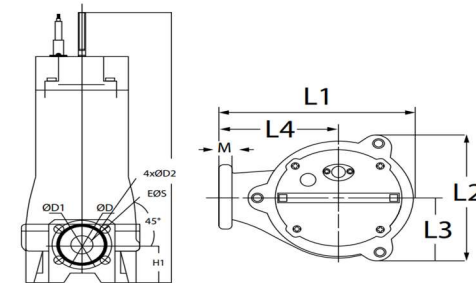
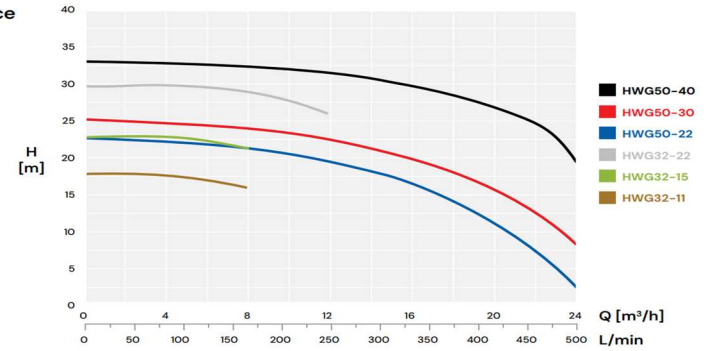
HWG32 / HWG50 Grinder Pumps



Motor

- Frequency / Pole number: 50Hz/2
- Insulation Class: F
- Protection Class: IPX8
- Heavy Duty Ball Bearings
- Double Silicon / Carbon Mechanical Seals

Performance



Dimensions

Model	Phase Ø	L1	L2	L3	L4	H	H1	D	D1	D2	M
HWG32-11-1	1	231	191	96	140	533	73	32	110	90	16
HWG32-11-1A	1	231	191	96	140	533	73	32	110	90	16
HWG32-11-3	3	231	191	96	140	533	73	32	110	90	16
HWG32-15-1	1	231	191	96	140	598	73	32	130	90	16
HWG32-15-3	3	231	191	96	140	557	73	32	130	90	16
HWG32-22-1	1	231	191	96	140	598	73	32	130	90	16
HWG32-22-3	3	231	191	96	140	557	73	32	130	90	16
HWG50-22-3	3	243	212	106	145	560	73	50	150	110	16
HWG50-30-3	3	243	212	106	145	586	73	50	130	110	16
HWG50-40-3	3	243	212	106	145	586	73	50	150	110	16

Commercial Plumbing & Fire Supplies

Site Address

6A Kelly Court,
Springvale, VIC 3171

Postal Address

6A Kelly Court,
Springvale, VIC 3171

Contact Details

P: 03 9791 7500
E: sale@cpfs.net.au

