

HWE Series

Submersible Pumps
Enclosed-Channel Submersibles



Application

- Heavy duty wastewater and sewage pumps
- Ideal for pumping sewage, stormwater and trade waste in domestic, commercial and industrial applications

Features

- High efficient and anti-clogging Enclosed Channel Impeller design
- Heavy duty HT200 cast iron construction
- Stainless steel shaft
- Guide rail kits available for all models
- Thermal overload protection

Working Conditions

- Liquid Temperature: 0 – 40°C (32 – 104°F)
- Max Immersion Depth: 5m

Technical Data

Model	Power kW (HP)	Discharge mm (inch)	Phase	Rated Flow (m³/h)	Rated Head	Solid Passage (mm)
HWE50-11-1A	1.1 (1.5)	50 (2")	1	8	16	15
HWE50-11-1	1.1 (1.5)	50 (2")	1	8	16	15
HWE50-11-3	1.1 (1.5)	50 (2")	3	8	16	15
HWE50-15-1	1.5 (2)	50 (2")	1	8	20	15
HWE50-15-3	1.5 (2)	50 (2")	3	8	20	15
HWE50-22-1	2.2 (3)	50 (2")	1	15	20	25
HWE50-22-3	2.2 (3)	50 (2")	3	15	20	25
HWE50-30-3	3 (4)	50 (2")	3	15	26	25

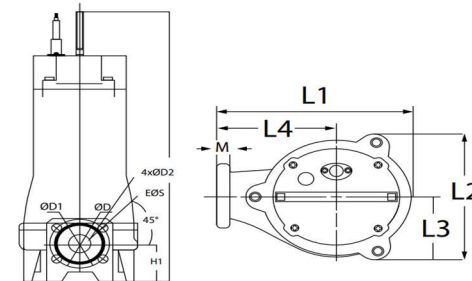
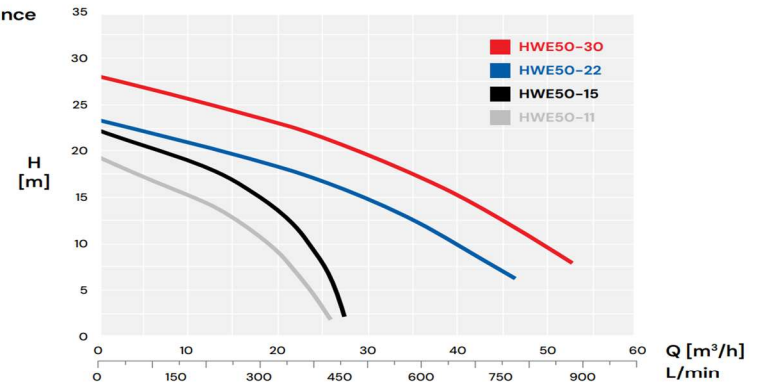
HWE50 /
HWE65 /
HWE80
Channel Pumps



Motor

- Frequency / Pole number: 50Hz/2
- Insulation Class: F
- Protection Class: IPX8
- Heavy Duty Ball Bearings
- Double silicon / carbon mechanical seals

Performance



Dimensions

Model	Phase Ø	L1	L2	L3	L4	H	H1	D	D1	D2	M
HWE50-11-1A	1	223	191	96	135	559	88	50	110	14	16
HWE50-11-1	1	223	191	96	135	559	88	50	110	14	16
HWE50-11-3	3	223	191	96	135	559	88	50	110	14	16
HWE50-15-1	1	223	191	96	135	627	88	50	110	14	16
HWE50-15-3	3	223	191	96	135	586	88	50	110	14	16
HWE50-22-1	1	270	223	113	163	611	75	50	110	14	16
HWE50-22-3	3	270	223	113	163	570	75	50	110	14	16
HWE50-30-3	3	270	223	113	163	559	75	50	110	14	16

Commercial Plumbing & Fire Supplies

Site Address

6A Kelly Court,
Springvale, VIC 3171

Postal Address

6A Kelly Court,
Springvale, VIC 3171

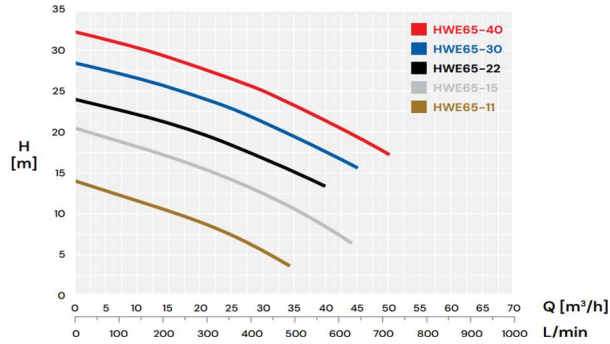
Contact Details

P: 03 9791 7500
E: sale@cpfs.net.au



HWE Series

Performance

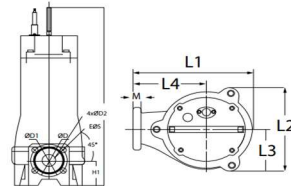


Technical Data

Model	Power kW (HP)	Discharge mm (inch)	Phase	Rated Flow (m³/h)	Rated Head	Solid Passage (mm)
HWE65-11-1A	1.1 (1.5)	65 (2.5")	1	15	10	25
HWE65-11-1	1.1 (1.5)	65 (2.5")	1	15	10	25
HWE65-11-3	1.1 (1.5)	65 (2.5")	3	15	10	25
HWE65-15-1	1.5 (2)	65 (2.5")	1	15	15	25
HWE65-15-3	1.5 (2)	65 (2.5")	3	15	15	25
HWE65-22-1	2.2 (3)	65 (2.5")	1	25	17	25
HWE65-22-3	2.2 (3)	65 (2.5")	3	25	17	25
HWE65-30-3	3 (4)	65 (2.5")	3	25	22	25
HWE65-40-3	4 (5.5)	65 (2.5")	3	25	28	25

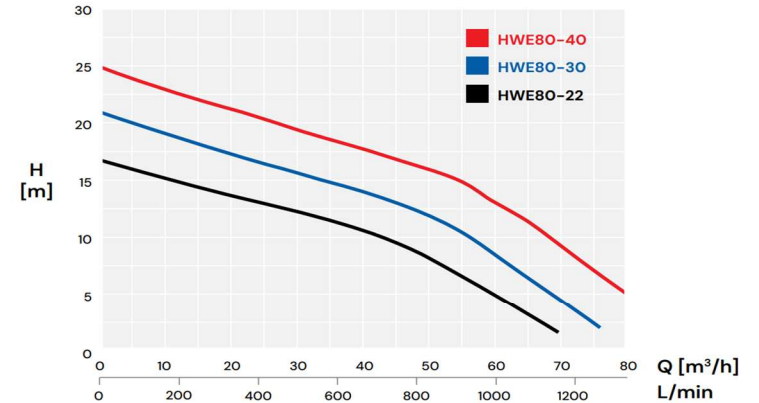
Dimensions

Model	Phase	Ø	L1	L2	L3	L4	H	H1	D	D1	D2	M
HWE65-11-1A	1	291	226	117	178	557	85	65	130	14	16	
HWE65-11-1	1	291	226	117	178	557	85	65	130	14	16	
HWE65-11-3	3	291	226	117	178	557	85	65	130	14	16	
HWE65-15-1	1	291	226	117	178	662	85	65	130	14	16	
HWE65-15-3	3	291	226	117	178	581	85	65	130	14	16	
HWE65-22-1	1	291	226	117	178	581	85	65	130	14	16	
HWE65-22-3	3	291	226	117	178	581	85	65	130	14	16	
HWE65-30-3	3	291	226	117	178	610	85	65	130	14	16	
HWE65-40-3	3	291	226	117	178	610	85	65	130	14	16	



HWE Series

Performance

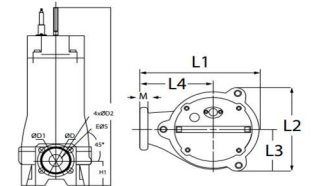


Technical Data

Model	Power kW (HP)	Discharge mm (inch)	Phase	Rated Flow (m³/h)	Rated Head	Solid Passage (mm)
HWE80-22-3	2.2 (3)	80 (3")	3	40	9	30
HWE80-30-3	3 (4)	80 (3")	3	40	13	30
HWE80-40-3	4 (5.5)	80 (3")	3	40	18	30

Dimensions

Model	Phase	Ø	L1	L2	L3	L4	H	H1	D	D1	D2	M
HWE80-22-3	3	266	224	113	160	594	86	80	150	18	18	
HWE80-30-3	3	266	224	113	160	620	86	80	150	18	18	
HWE80-40-3	3	266	224	113	160	620	86	80	150	18	18	



Commercial Plumbing & Fire Supplies

Site Address

6A Kelly Court,
Springvale, VIC 3171

Postal Address

6A Kelly Court,
Springvale, VIC 3171

Contact Details

P: 03 9791 7500
E: sale@cpfs.net.au

