

DV Series

Submersible Pumps | Vortex Pump



Made in Italy by Pentax Pumps

Application

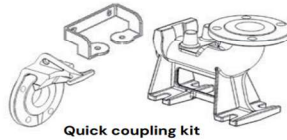
The DV Series are drainage pumps for charged liquids with set-back Vortex type impeller for civil and industrial applications, specifically designed for very heavy use. Available in free standing or with guide rail coupling kit.

Specification

- Pump body: Cast Iron
- Impeller: Cast Iron
- Mechanical seal: (double seal with oil barrier) silicon carbide on pump side, ceramic-graphite on motor side
- Motor shaft: Stainless steel AISI 304
- Passage of solids:
 - Ø Max 50mm (DV65.15.1, DV65.15.3)
 - Ø Max 45mm (DV80.30.3, DV100.55.3)
- Depth of immersion: 20m
- Liquid temperature: 0-40 °C
- Cable: HO7 RN8F, 10m
- Bolts: A2 stainless steel
- Foot support: Galvanised iron
- Gaskets: NBR rubber
- Two poles induction motor
- Insulation class F
- Protection degree IPX8



ACCESSORIES



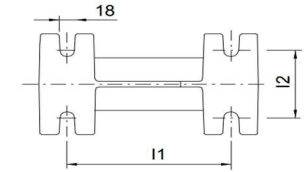
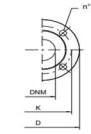
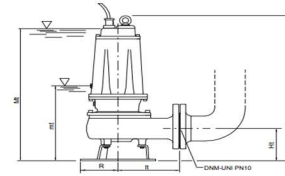
Quick coupling kit



Counterflange

Features and benefits

- Non clog design

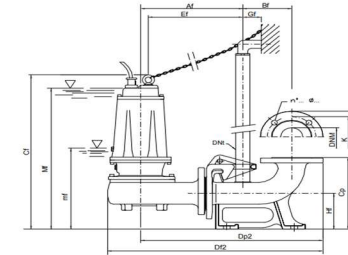


Dimensions

Model	Dimensions (mm)							Kg
	Ct	Ht	R	It	mt	Mt	DNM	
DV65.15.1	551	123	117	191	243	513	65	41.5
DV65.15.3	551	123	117	191	243	513	65	41.5
DV80.30.3	645	148	160	210	285	600	80	68
DV80.55.3	725	178	180	232	358	670	80	90

mt: minimum working level

Mt: minimum submergence level for continuous duty



DV4 Series also available

Contact our sales team for the DV100.55.3 data sheet: sales@maxijet.com.au

Dimensions

Model	Dimensions (mm)														Kg				
	Af	Bf	Cf	Cp	Df1	Df2	Dp2	Dnt	Ef	Gf	Hf	I1	I2	Is		Ls	mt	Mt	DNM
DV65.15.1	303	145	559	260	200	639	541	1 1/4"	280	55	130	200	100	95	140	251	521	65	65
DV65.15.3	303	145	559	260	200	639	541	1 1/4"	280	55	130	200	100	95	140	251	521	65	65
DV80.30.3	350	165	690	340	220	720	615	2"	319	85	190	250	140	130	180	327	642	80	80
DV80.55.3	370	165	745	340	235	750	638	2"	338	85	190	250	140	130	180	380	690	80	80

mt: minimum working level

Mt: minimum submergence level for continuous duty

Commercial Plumbing & Fire Supplies

Site Address

6A Kelly Court,
Springvale, VIC 3171

Postal Address

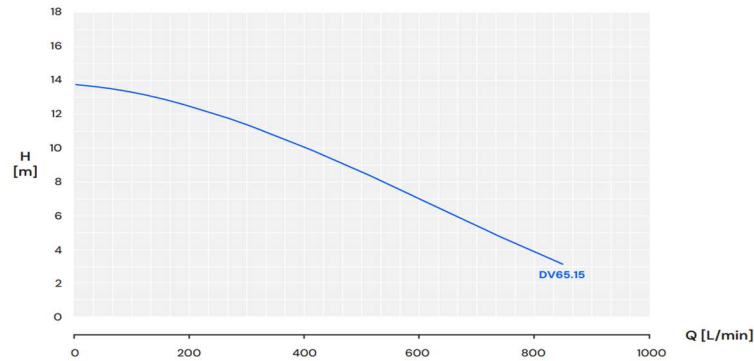
6A Kelly Court,
Springvale, VIC 3171

Contact Details

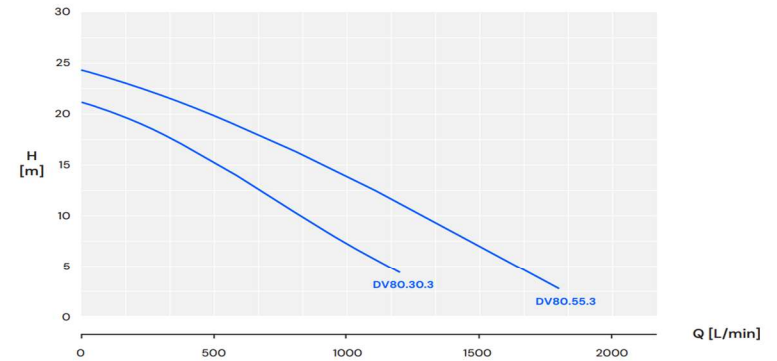
P: 03 9791 7500
E: sale@cpfs.net.au



Performance DV65 Series



Performance DV80 Series



Technical Data

Model	Volts	Power (kW)	Amps (A)	Max. FLOW (L/min)	Max. HEAD (m)	Outlet (mm)	Cable Length (m)
DV65.15.1	240	1.5	12.6	900	13.7	65	20
DV65.15.3	415	1.5	5	900	13.7	65	20

Model	Q (m³/h - l/min)								
	0 12 24 36 42 48 51 54								
	0 200 400 600 700 800 850 900								
1 Phase	3 Phase	H (m)							
DV65.15.1	DV65.15.3	13.7	12.6	9.9	7	5.4	3.8	3.1	

Technical Data

Model	Volts	Power (kW)	Amps (A)	Max. FLOW (L/min)	Max. HEAD (m)	Outlet (mm)	Cable Length (m)
DV80.30.3	415	3.0	8.1	78	21	80	20
DV80.55.3	415	5.5	14.4	108	24.2	80	20

Model	Q (m³/h - l/min)																	
	0 12 24 36 42 48 51 54 60 72 78 84 90 96 108 114 120																	
	0 200 400 600 700 800 850 900 1000 1200 1300 1400 1500 1600 1800 1900 2000																	
3 Phase	H (m)																	
DV80.30.3	21	19.4	16.6	13.5	12	10.4	9.6	8.8	7.2	2.8								
DV80.55.3	24.2	22.7	20.7	18.7	17.6	16.4	15.8	15.2	13.9	11.1	9.7	8.2	6.8	5.4	2.8			

Commercial Plumbing & Fire Supplies

Site Address

6A Kelly Court,
Springvale, VIC 3171

Postal Address

6A Kelly Court,
Springvale, VIC 3171

Contact Details

P: 03 9791 7500
E: sale@cpfs.net.au

